

2011 General Development Plan

Submitted by:

**Daishowa Marubeni International Ltd
Peace River Pulp Division**



And

**Canadian Forest Products Ltd
Grande Prairie Division**



And

Zavisha Sawmills Ltd



Table of Contents

Highlights	6
Section 1 - Introduction.....	8
Section 2 - Summary of Operations to Date	12
Watercourse Crossings.....	12
Outstanding Obligations	13
Block Road Inventory.....	14
Section 3 - Forecasted Operations.....	14
Sequencing for Company Operations	14
Incidental Production and Destination	15
General Development Plan Map	15
Variance.....	16
Retention	16
First Nation Consultation	17
Section 4 - Permanent Road Development and Maintenance.....	17
Potential Road Development Projection.....	17
Access Management	18
2011 Weed Management Plan	20
Environmental Stewardship	23
Section 4 - Slash Disposal.....	23
Section 5 - Forest Protection Plan	24
Section 6 - Reforestation Program.....	24
Section 7 - As-Built Plans.....	24



Appendix 1: Tables	25
Table 1: Deciduous Production to Date	26
Table 2: Coniferous Production to Date	27
Table 3: Outstanding Operations	28
Table 4: DMI Block Status Report	30
Table 5: Canfor Block Status Report	36
Table 6: Zavisha Block Status Report	38
Table 7: DMI Roads With Proposed Activities	38
Table 8: Zavisha Roads with Proposed Activities	38
Table 9: Sequencing of DMI Operations	39
Table 10: Sequencing of Canfor Operations	40
Table 11: Sequencing of Zavisha Operations	40
Table 12: Incidental Conifer Production	41
Table 13: Incidental Deciduous Production	42
Table 14: Variance	43
Table 15: Retention	45
Table 16: Road planning, maintenance and construction activities	46
Table 17: Weed Inspection and Control	47
Table 18: DMI As-built Plan	51
Table 19: Canfor As-built Plan	55
Table 20: Zavisha As-built Plan	56



Distribution

Applicable components of this GDP have been provided in hardcopy and/or electronic format to the following agencies for review:

Alberta Sustainable Resource Development (ASRD)
Peace Area, Peace River

The Following Agencies are notified through ASRD

Fish and Wildlife Division, Peace River



Highlights

The following is a summary of initiatives and notable highlights of the 2011 General Development Plan for Daishowa Marubeni International Ltd, Canadian Forest Products Ltd and Zavisha Sawmills Ltd on FMA0900044 (East), FMA0900045 (West) and crown lands. Details on each of the points listed below can be found throughout the GDP document and tables.

- Felled inventory: Following the completion and analysis of results from the second trial of felled inventory in the 2010 season. DMI may look into continuing on with the practice of felled inventory for up to 400,000m³ for the 2011 timber year.
- Whiskey Jack road construction: The first 10km's of road has had grade built and this summer will have gravel laid. The south spur is of access will be started in the 2011 timber year. The south spur road is a temporary road and will have approval under the Final harvest plan and Annual Operating Plans for the Whiskey Jack operating area.
- Notikewin road activation: LOC 001150 the South Notikewin Road. This LOC is located at the end of the P2200 sulphur lake road and then north to the Notikewin River. DMI is planning on bringing this road back up to non-frozen operating condition to access non-frozen volume in the area.
- Annual Indicator Report: DMI will be producing an Indicator performance report this year to address voits and audit findings in line with the 2011 DFMP.
- Combined AOP for P19 Canfor, Zavisha and DMI: There will be combined AOP's submitted for all operating areas in P19 for DMI, Canfor and Zavisha. One for non-frozen operations and another for frozen operations. Final Harvest Plans will not be combined; they will be submitted by operating areas as usual.
- New Ground Rules: There has been new Ground Rules approved for FMA0900045. See Section 1- Applications of Ground Rules for further information.
- Volume Supply Agreement for P19: A Volume supply agreement has been developed for VSA2 area of FMU P19 between DMI, Canfor and Zavisha.
- Whitezone Extension: Whitezone DTAP530001 Sustained Yield units are being operated with an extension letter for DTAP530001.
- Lubicon Area of Concern: Within the Lubicon area of concern DMI is working with the Lubicon First Nation to being harvesting in the area.
- TPRS Audits: DMI timber production numbers have been audited to April 30, 2009. However an official report of the 2009 numbers has not been received to date. Production numbers for the 2010 timber year have not been audited and may change following ASRD audit in September.



2011 General Development Plan

Page 5 of 56

DMI/Canfor/ Zavisha General Development Plan Submitted By:

<p>Gordon Whitmore, RPF⁹⁸⁵ Advisor, Planning and Reforestation Dalshowa Manubeni International Ltd Peace River Pulp Division Phone: (780) 624-7036 E Mail: gwhitmore@prpddmi.com</p> <p>Signature: <u><i>Gordon Whitmore</i></u></p> <p>Date: <u>May 13, 2011</u></p>
<p>Rudy Ostrem Woodlands Manager Zavisha Sawmills Hines Creek Phone: (780) 494-3333 E Mail: beckiezavisha@hotmail.com</p> <p>Signature: <u><i>Rudy Ostrem</i></u></p> <p>Date: <u>May 18, 2011</u></p>
<p>Bernie Morin, RPF⁹⁷⁰⁰⁰⁹ Planning Supervisor Canadian Forest Products Ltd. Grande Prairie Phone: (780) 538-7706 E Mail: bernie.morin@canfor.com</p> <p>Signature: <u><i>Bernie Morin</i></u></p> <p>Date: <u>May 16, 2011</u></p>



- Hog Fuel Inventory: DMI is leaving a percentage of hog fuel inventory piled in the field for one season to be removed the following season. This is reflected in the fire control plan under the outstanding obligations and slash disposal portions of the document.
- Table Changes in the GDP: There have been changes to the watercourse crossing table and the roads table in the GDP.
 - The watercourse crossing table is no longer in the GDP document; but is available upon request. See Section 2: Watercourse crossings for further details.
 - The roads table used to show all block roads for up to three years. This table now only shows the block roads that are still open two years after skid clearance.
 - The document now has all tables in appendix 1 at the back of the document.



Section 1 - Introduction

This GDP addresses the proposed and forecasted operations of DMI, Canfor (only P19 and P52 for Canfor) and Zavisha for the period from May 1, 2011, to April 30, 2016. It contains broad information regarding the Companies' anticipated fibre supply, the proposed harvest levels necessary to meet that supply, and the access construction and maintenance activities necessary to support these harvesting plans.

Applications of Ground Rule

The GDP is submitted in accordance with DMI's current Forest Management Agreements (FMA), the requirements of Daishowa Marubeni International Ltd FMA0900045 Operating Ground Rules 2011 (OGRs) and area-specific standards developed with ASRD-Peace River.

DMI's 2011 FMA0900045 Operating Ground Rules will be used in all operations within both FMA0900044 and FMA0900045, within DMI license DTLP530001 and permits DTPS210001 and CTPP530295, also by the Conifer operators with the following exceptions.

Canfor and Zavisha are following the Ground rules Addendum-Mountain Pine Beetle Operations (7.0.31) for pine strategy retention prescription of 1% non pine species. Canfor will be following the 2011 DMI Operating Ground Rules for retention strategy (7.4) on blocks that are not being operated under the pine strategy. Zavisha will not be following the 2011 DMI Operating Ground Rules for retention strategy (7.4). For blocks that are not under the pine strategies please refer to Zavisha's retention strategy that has been submitted separately.

Within DTLP530001 the exceptions from the 2011 DMI Operating Ground Rules will be the retention strategy of 15% (7.4.11) will not be followed. The provincial average of 3% will be followed. Variance reporting (4.1) will not be done until a timber supply analysis is completed and an SHS is determined.

For operations in DTLP160001 Manning Diversified Forest Products (MDFP) Operating Ground Rules will be followed. The only exception is that DMI will not be following MDFP's Downed Woody Debris outlined in the Operating Ground Rules.

The GDP outlines the operations for DMI, Canfor and Zavisha and incorporates the management objectives provided in the revised Detailed Forest Management Plan (DFMP) scheduled to be submitted in 2011.



Forest Management Agreements, Quotas and Licenses

DMI's twenty-year Forest Management Agreement (FMA8900027) was renegotiated with the Government of Alberta in July 2009. In consideration of a number of strategic planning initiatives, the decision was made to split the original FMA into two new FMA's; FMA0900044 (Eastside FMA) and FMA0900045 (Westside FMA).

Westside FMA (FMA0900045)

The Westside FMA is composed of FMU P19 which is an amalgamation of previous FMU's P10, P13 and the south portion of P15. Adjustments were made in the AAC's to allow the FMA to fall in line with the timber year. Until the new DFMP is approved the AAC's from the 1999 DFMP are being used.

Eastside FMA (FMA0900044)

The Eastside FMA consists of all of the FMU's from the previous FMA8900027 that fell on the East side of the Peace River (P3, P4, P5, F1, and S15). Associated allocations from these areas have been assigned under the new FMA. As was the case with the Westside FMA, the necessary adjustments were made in the AAC's to allow the FMA to fall in line with the provincial timber year. Until the new DFMP is approved the QAC and AAC's from the 1999 DFMP are being used.

Quota's and Licences

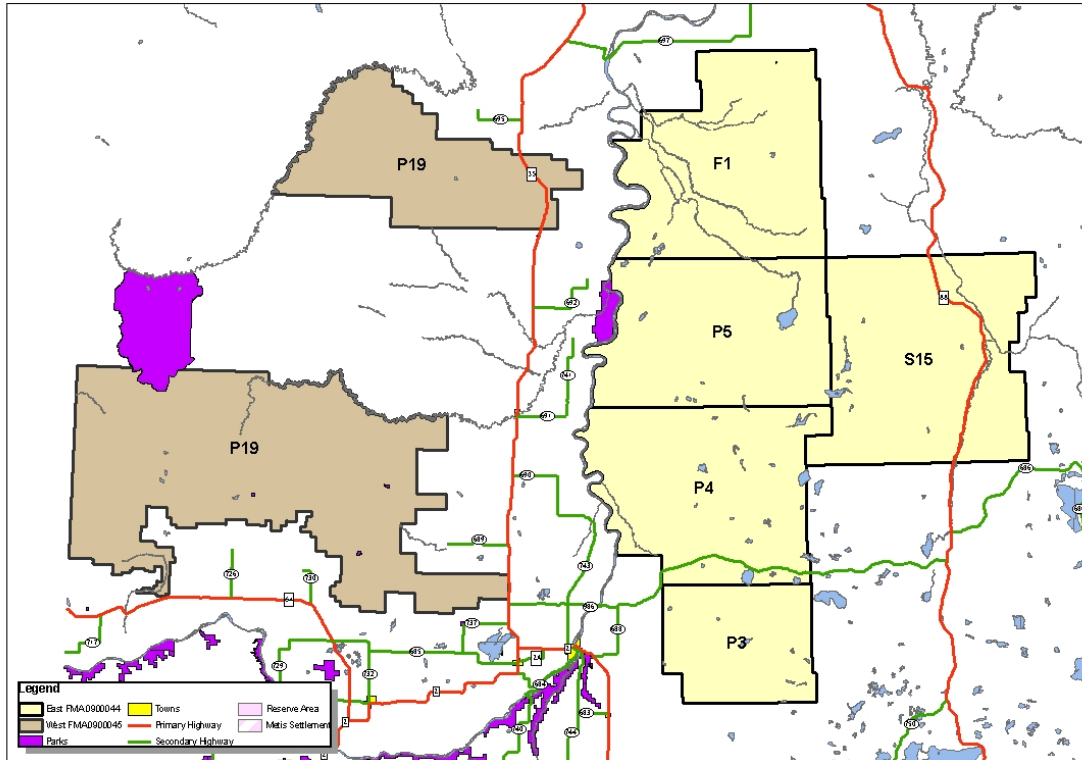
DMI's white zone license DTAP530001 is being operated under an extension letter until a formal TSA is completed after DMI's two DFMP's are submitted. The previous QAC for DTQP530001 is the current volume being used for production targets.

With the amalgamation of P13 and the south portion of P15 into P17 and then the further combining of P17 and P10 to form P19 to make up DMI's new Westside FMA0900045. Canfor's new CTQP190001 quota replaces quotas CTQP130002, CTQP130004, CTQP150004 and CTQP170002. Canfor is using license CTLP130001 for reporting volume, which is valid until April 30, 2014

The same Westside FMU amalgamations as described above also affected Zavisha's quotas and licenses. Zavisha's new CTQP190002 quota replaces CTQP130003. Zavisha is using CTLP130004 for reporting volume. Under the Volume Supply Agreement (VSA) between Canfor, DMI and Zavisha, DMI's conifer allocation is being cut by Zavisha and is charged to CTLP130005.



See the following map for updated FMU's.



Operations within the Lubicon Area of Concern

DMI has worked in partnership with the Lubicon First Nation to salvage timber generated by the energy sector. The Company has not to date utilized incidental deciduous volumes generated by the quota holders operating within the area of concern. DMI will continue to discuss incidental volume with the Lubicon First Nation, but will not utilize any volume without their permission. The Lubicon First Nation and DMI are working together to reach common understandings for the future of the timber resource within their asserted land claim.



Fibre Supply Strategy

The mill fibre requirements of DMI, Canfor and Zavisha for the 2011 timber year are shown below respectively.

Note: The numbers in the following tables reflect the current production plan requirements and are subject to change based on product demand.

DMI Hardwood/Softwood Fibre Supply Strategy

Aspen Bush Chip Deliveries	1,322,660 m ³
Round wood required in satellite yards	215,317 m ³
Total Deciduous Mill requirements	1,537,977 m ³
Conifer Bush Chipped Deliveries	32,166 m ³
Conifer Deliveries from Residual Mills	923,868 m ³
Total Conifer Mill requirements	956,034 m ³

Canfor Fibre Supply Strategy

Canfor Grande Prairie (P19)	201,886 m ³
DMI Chips	10,000 m ³
Total	211,886 m ³

Zavisha Fibre Supply Strategy

Zavisha Mill requirements	110,000 m ³
FMA0900045 wood supply	38,000 m ³
CTQP190002 wood supply	35,573 m ³
CTQP520002	3,000 m ³
Total	76,573 m ³



Section 2 - Summary of Operations to Date

Chargeable deciduous production from DMI tenures are summarized in **Appendix 1: Table 1** and includes information from the latest quadrant to the end of the 2010 operating season.

Volumes for the 2010 season (May 1, 2010 to Apr 30 2011) have been adjusted to reflect chipper gains from DMI's whole tree in-block chipping operations. Sustainable Resource Development, Forest Management Branch have audited reported volumes for all tenures to April 30, 2008 and have scheduled their audit of DMI's 2010 production and the completion of the 2009 timber audit for September 2011. A block level summary of actual chipper gains for the 2010 season can be provided upon request to ASRD for assessment of the chipper gain percentages being utilized.

In light of the Mountain Pine Beetle infestation DMI occasionally chips conifer when the volume is not used for lumber production. As such, a summary of DMI's chipped conifer volume is provided in **Appendix 1: Table 2**.

Chargeable coniferous productions from Canfor and Zavisha's tenures are provided in **Appendix 1: Table 2** and include information on volumes harvested for CTQP190001 (CTLP130001), CTQP190002 (CTLP130004) and CTQP520003 (CTLP520008) as well as incidental conifer volume received off DMI's FMA0900045.

WATERCOURSE CROSSINGS

DMI, Canfor and Zavisha follow an annual monitoring program of stream crossings, until final reclamation work has been completed, as per the current Operating Ground Rules.

DMI's watercourses will be monitored using the strategy set out in our current "Watercourse Crossing Field Guide and Strategy Manual" that has been reviewed with the local Peace River ASRD. DMI's watercourse monitoring process is a risk based process taking into consideration all factors of each crossing and then randomly making a sampling selection. The "Watercourse Crossing Field Guide and Strategy Manual" is available upon request.

In 2010 there was 13 crossing randomly chosen for monitoring from the crossing built during the 2009/2010 operating season. These crossing where inspected on the ground and no concerns/issues were found. These crossings will be



monitored for one more year and if no problems are found all crossing from 2099/2010 timber year will be considered satisfactory reclaimed.

Canfor's watercourses are monitored using their Erosion and Sediment Control Manual, available upon request. In conjunction, Canfor is a member of the Foothills Research Stream Crossing Program for ongoing monitoring activities.

Zavisha will be following DMI's new Ground rules in regards to how watercourses are installed, reclaimed and monitored. Zavisha monitors all temporary crossing yearly for erosion until they are 80% revegetated.

A table of the status of existing watercourse-crossings will be provided upon request from ASRD.

OUTSTANDING OBLIGATIONS

Blocks and Decked Volumes

A status report is prepared annually with the submission of the GDP to indicate "outstanding obligations" that constitute required operations that are yet to be completed. Outstanding debris disposal will normally take place in the late fall or winter. Blocks that have been harvested in non-frozen ground conditions may have roads left un-reclaimed until the next summer for road decompaction depending on when conifer was removed and operations were completed. Blocks stay on this list for a full calendar year from the time the final inspection confirms that piling and reclamation have been completed on the block, at which time they are removed from the list.

DMI's, Canfor's and Zavisha's decked volume and felled inventory volumes in the field are shown in **Appendix 1: Table 3**.

Outstanding obligations for harvested blocks to April 30, 2011 are provided in **Appendix 1: Table 4** for DMI, **Table 5** for Canfor and **Table 6** for Zavisha.

Considerations for certain blocks in various stages of completion are as follows:

- DTLP160001-WC03: block 3003 has felled inventory that will be chipped under frozen ground conditions in the 2011/2012 timber season.
- SU-P2200: blocks 61, 63 & 64 have felled inventory for DMI that will be chipped under frozen ground conditions in the 2011/2012 timber season. Blocks 948 and 854 have un-delimbed wood decked roadside that will be processed and hauled in the summer of 2011.
- CT-South: block 0005 has felled inventory that will be chipped under frozen ground conditions in the 2011/2012 timber season.



- DTLP530001: 219, 220, 222 & 225 have felled inventory that will be chipped under frozen ground conditions in the 2011/2012 timber season.
- DH-P2100: Blocks 13, 20, 23, 26, 27, 29, 56, 57, 58, 101, 107, 130 have hog piled to be removed in the winter of the 2011 timber year. Blocks 111, 13, 120, 121 and 122 have felled inventory that will be chipped under frozen ground conditions in the 2011/2012 timber season. Blocks 106, 108, 109, 110, 115, 118, 119, 123, 124, 127, 128 & 129 have summer road reclamation to be completed during suitable conditions during the summer of 2011.
- CL-HarmonValley, EP-CacheCreek, EP-KepplerCreek : blocks have summer road reclamation to be completed during suitable conditions during the summer of 2011.
- EP-Whiskey Jack: Blocks 0246 & 0269 have felled inventory that will be chipped under frozen ground conditions in the 2011/2012 timber season. Blocks 0246 & 0254 have summer road reclamation to be completed during suitable conditions during the summer of 2011.

BLOCK ROAD INVENTORY

As outlined in the Detailed Forest Management Plan (DFMP), DMI, Canfor and Zavisha are committed to a monitoring of all block roads until final reclamation work has been completed. To date, all active block roads have been inspected annually. Where re-vegetation was found to be satisfactory (80% revegetated), roads have been abandoned indicating that the Companies have fulfilled all reclamation responsibilities.

A listing of DMI block roads that are still open two years after the skid clear date as per the ground rules (11.2.3.2) and all proposed activities is provided in **Appendix 1: Table 7**. Zavisha's listing of block roads that are still open two years after the skid clear date as per the ground rules (11.2.3.2) and all proposed activities is provided in **Appendix 1: Table 8**. Canfor's listing of roads and activities will be submitted to ASRD under separate cover by June 2011.

Section 3 - Forecasted Operations

SEQUENCING FOR COMPANY OPERATIONS

DMI may continue with felled inventory operations in the winter of the 2011\12 timber year. Felled inventory operations could be planned for up to 400,000m³ deciduous. This will be determined after the 2010 felled inventory is chipped, processed and results analysed. DMI will work as closely with quota holders on an operational basis as is feasible. On blocks scheduled for felled inventory in 2011 timber year there will be a 5 meter slash free zone left around boundary



and laid out retention patches, the conifer will be either left standing, skidded to roadside or removed. The conifer portion will be discussed with the quota holder to find the best workable solution for both companies.

Conifer production from CTQP190001 is directed to Canadian Forest Products Ltd. sawmill located in Grande Prairie. Canfor will continue to concentrate their operations in predominately pine and beetle infested areas using the pre-blocking for the new spatial harvest sequence (SHS).

Zavisha's Operations will be concentrated to ST-Eureka River, RL-Whitemud River and the western edge of ST-Whitemud River operating areas within FMA0900045 as indicated in the pre-blocking for the new spatial harvest sequence (SHS). Zavisha will also continue to concentrate their efforts in harvesting viable Mountain Pine Beetle infested areas. A viable pine stand is merchantable, meets SRD's definition for a merchantable pine stand has at least 50% bark attached to the stem and checking is no more than 2mm wide. If checking is more than 2mm or bark loss is greater than 50%, discretion of the sawmill will be used on a per stand basis on the stand is still merchantable. Forecasted operation areas may be subject to change depending on beetle activity in order to manage beetle damage to their fibre supply.

Appendix 1: Tables 9, 10 and 11 represent the expected sequencing of DMI, Canfor and Zavisha operations respectively for the 2011 to 2015 period for all company's dispositions.

INCIDENTAL PRODUCTION AND DESTINATION

The expected level of incidental coniferous volume that will be generated from deciduous dominated stands in DMI operations during the 2011/2012 operating year is provided in **Appendix 1: Table 12**.

The expected levels of deciduous volume that will be generated from coniferous operations and expected to be delivered to DMI during the 2011/2012 operating season are shown in **Appendix 1: Table 13**.

GENERAL DEVELOPMENT PLAN MAP

The General Development Plan map provides a general overview of five years of planned operations and access for DMI, Canfor and Zavisha. The GDP map (attached) reflects DMI, Canfor, Zavisha and Tolko's planned operations on the P19 Forest Management Unit (FMU) of DMI's Westside FMA (FMA0900045) as this FMU is integrated with Canfor Grande Prairie and Zavisha Lumber. The GDP



map also includes all of DMI's operations on crown lands including the White zone area and FMU P16 in which DMI has a renewable Deciduous Timber Allocations and the Eastside FMA (FMA0900044) and permits DTSP210001 and CTPP530295.

VARIANCE

The 2011 operating season represents year 2 for the pre-blocking on the west FMA0900045 that will be part of the new Spatial Harvest Sequence once the new DFMP is submitted. For the east FMA0900044 the 2007 sequence was used to create the variance shown. Planned variance is also calculated on an operating area basis and reported in the Final Harvest Plans submitted to ASRD. Within an operating area there is only ever one active FHP.

The variance on the west side shows DMI, Canfor and Zavisha's variance. The East side is only showing DMI's variance.

A summary has been developed following the completion of the aerial photography, softcopy and GPS data analysis of the harvested areas used to create the as-builts. Please refer to **Appendix 1: Table 14** for a roll up of variance for 2009/2010 timber years.

RETENTION

The retention levels show all retention information for FMA0900044 and FMA0900045 DMI has available broken out by company as the quota holders have chosen to follow company specific retention policies. Retention numbers are as shown in **Appendix 1: Table 15**.

Photo update data was used for the calculation of the 2009 retention numbers. As-built data has been used for the 2010 operating season. Once updated aerial photography and softcopy data is available the summary of retention will be updated with the next yearly GDP submission.

Retention from 2005 – 2008 is being reviewed and discussed separately. The final remarks on retention numbers from 2005-2008 will be published with the indicator report later this year.



FIRST NATION CONSULTATION

DMI, Canfor, Zavisha and Tolko worked together to provide information on our 2011 General Development Plan to First Nations with traditional use areas that overlap our FMA. Information packages were sent out to First Nations in late March/early April prior to GDP submission to ASRD and included a general description of where and when we were planning both harvest and silviculture operations and included an overview map, detailed maps, general information about our companies and our specific methods of planning, harvesting and reforestation. These packages were delivered in-person and when available, explained to representatives of the following First Nations between mid March and May 1st 2011:

Duncan's First Nation,
Horse Lake First Nation,
Loon River Cree,
Lubicon Lake Indian Nation, and
Woodland Cree First Nation.

Follow-up with each First Nation was completed several weeks later to ask for comments and/or concerns, or if there was need of any additional information. Electronic versions of the information packages were also made available to the First Nations and where requested, shapefiles of operating areas were provided.

Section 4 - Permanent Road Development and Maintenance

POTENTIAL ROAD DEVELOPMENT PROJECTION

A projection of potential road development, maintenance and construction activities during the 2011/12 period is provided in **Table 16**.

Construction

DMI will continue with construction on LOC 951150 Whiskey Jack Road in 2011/2012. To date, approximately 8.7 km has been constructed to grade. Currently, DMI plans to commence construction of the temporary spur roads in 2011/2012 subject to approval of the EP-Whiskey Jack FHP.

DMI is assessing the feasibility of reactivating LOC 001150 (South Notikewin Road) and returning the road to dry weather access to facilitate timber harvest operations in the Sulphur Lake Compartment. Activities necessary to complete



the reactivation of the road include reinstalling watercourse crossings, grade work and graveling.

All companies are continuing to minimize road construction through the co-ordination of access needs, to ensure that shared access is developed wherever possible and our overall foot-print on the landscape is minimized.

Reclamation

Northern Sunrise County agreed to conduct necessary work in order to obtain a Letter of Closure on DMI' LOC 950037 as part of their approval for the Harmon Valley Road upgrade. Reclamation work is still ongoing.

DMI and Canfor currently do not have plans to reclaim any other roads that are under LOC disposition.

ACCESS MANAGEMENT

The Operating Ground Rules provide the procedures approved by the Government of Alberta for planning and working within wildlife zones. Temporary roads authorized under approved FHP/AOP, will be operated in accordance with the Operating Ground Rules.

DMI Licences of Occupation (LOC) - Access Restrictions

All Company access roads are open for public travel, with a few exceptions. As required by ASRD, all companies restrict access to certain roads held under LOC to non-industrial users for wildlife protection purposes as described below.

All companies strongly support the establishment of Roadside Sanctuaries on all permanent Company roads as a means of protecting wildlife, and encourages employees and contractors to report any sanctuary violations to the proper authorities.

Disposition: LOC 920770

Road Name: P5-100 East Haul Road

Disposition Holder: DMI

Primary Access Restriction Type(s): Gate & Roadside Sanctuary Corridor

Access Restriction Location: Whiskey Jack Creek Gate 7-23-90-20-W5M (km 56); Corridor km 0-56

Details:

- Gate was installed in the spring of 1999, as per Ministerial Authority requiring the DMI East Haul Road be closed to public travel for wildlife management purposes.



- DMI currently uses padlocks with a 'tamper resistant' box to enclose the lock at this gate.
- Outside of typical industrial activity period, there is an increase in vandalism to the Whiskey Jack gate. DMI routinely replaces the lock and on several occasions, has repaired various forms of vandalism to the gate and the locking mechanism.
- During the normal industrial operating season, instances of vandalism to the Whiskey Jack gate are greatly reduced due partially to the fact that the gate is open.
- DMI has worked closely with ASRD to monitor traffic going through the Whiskey Jack Gate at strategic periods throughout the year including manning of the gate.
- ASRD has established a roadside sanctuary corridor along DMI's East Haul Road up to the Whiskey Jack Gate.

Disposition: LOC 012169

Road Name: P5-100 East Haul Road

Disposition Holder: DMI

Primary Access Restriction Type(s): Gate

Access Restriction Location: Unnamed Creek SW 24-101-17-W5M (F1 Gate)

Details:

- The Letter of Authority issued with this LOC requires this gate to remain closed during inactive harvest operations to restrict access.

Disposition: LOC 900652

Road Name: P10-100 Keg River Road

Disposition Holder: DMI

Primary Access Restriction Type(s): Gate

Access Restriction Location: Unnamed Creek NE 13-101-25-W5M

Details:

- At the request of the ASRD, the Letter of Authority was amended to require an approved access management plan.
- An access management plan jointly developed between DMI and an industrial user has been approved.

Disposition: LOC 951150

Road Name: Whiskey Jack Road

Disposition Holder: DMI

Primary Access Restriction Type(s): Seasonal Bridge Removal

Access Restriction Location: Unnamed Creek in SW-23-90-20-W5M

Details:

- Due to the road location within the Winter Ungulate Range and Special Access Zone, an access management strategy was developed and approved as part of the amended Letter of Authority.



- The 1st bridge on the road will be removed seasonally between active operating periods.

Disposition: LOC 971966

Road Name: Hawk Hills Road

Disposition Holder: DMI

Primary Access Restriction Type(s): Earthen Berm & Bridge removal

Access Restriction Location:

- Letter of Authority conditions require 2 earthen berms be constructed at the start of the road and bridges to be removed when road is not in use.

Disposition: LOC 082590

Road Name: Clear Hills Connector Road

Disposition Holder: Canfor

Primary Access Restriction Type(s): Trenches

Access Restriction Location:

- Two trenches dug across the road between Km 3 & 4 to control access.

Third Party Industrial Use

All companies currently work with other industrial users through the issuance of road use agreements. These agreements and regular communications are used to convey the Letter of Authority conditions (LOA) for all companies LOC's being used.

2011 WEED MANAGEMENT PLAN

The development of a weed management plan is in response to the ASRD Forestry Directive 2001-06 (Weed Management in Forestry Operations). All company operations will implement specific guidelines contained in Forestry Directive 2001-06 wherever practical as outlined within this Weed Management Plan.

Exclusions

This plan is not intended to address DTAF260006 (this license replaced DTAF910001 effective May 1, 2003), as DMI does not conduct company operations within this timber allocation, but only receives the incidental deciduous volume from the coniferous Forest Management Agreement (FMA) holder.



OBJECTIVES:

1. Education and Training of staff to increase awareness of weed concerns within the companies' sphere of interest
2. Prevention, Inventory and Control of noxious and prohibited noxious weeds classified by the Alberta Weed Control Act and Regulation
3. Activities & Initiatives that further the management of weed concerns within the companies' sphere of interest

1. Education and Training:

Full time and seasonal staff will receive information regarding weed control and awareness. Training components may be included in contract start-up meetings and orientation sessions for summer students. Items covered may include weed identification, biology, spread prevention, disposal and the Weed Control Act and Regulations.

2. Prevention, Inventory and ControlPrevention

The companies will implement where practical the recommended '*Good Standards of Practice for Prevention*' outlined in Forestry Directive 2001-06. Prevention measures will focus on clean equipment, limited disturbance and clean seed usage.

Inventory (visual assessment)

As all companies' area of interest consists of a large land base of approximately 3 million ha, it is not feasible to inventory the entire area. In consultation with the SRD FMA Forester, the Forest Health Officer, DMI and CANFOR staff, the inventory will be concentrated on company access routes, with a primary focus of those held under LOC and on areas with current year activities. The inventory is ongoing. **Table 17** contains a schedule of the visual inventory on company dispositions to be completed in 2011.

LOC Roads (All Classes)

Roads held under LOC will be scheduled for routine monitoring within **Table 17**.

Class III & IV Roads (non LOC)

Non LOC roads will be monitored outside of the Weed Management Plan. Monitoring will occur at various stages of the operating process.

During pre-harvest and preliminary work stages (planning and layout), field staff will note if weed species are encountered within planned harvest blocks or along proposed access routes. These comments will be forwarded to the appropriate company representative for inclusion in **Table 17**.



Disturbed areas are monitored to assess re-vegetation success on non LOC roads as part of the companies' annual road-monitoring program. Field staff will note the presence of weed species discovered during this routine monitoring and report these occurrences to the appropriate company representative for inclusion in **Table 17**.

Control

Control measures are not included in this weed management plan. Cost effective and environmentally friendly control measures can be tailored for the weed problems within the companies' sphere of interest. Areas targeted for control will implement where practical the recommended '*Prioritizing Areas for Control Measures*' outlined in Forestry Directive 2001-06 and will be based on weed classification, location, and size.

Cooperative control opportunities will be pursued if practical in areas where weed infestations span multiple dispositions or border of responsibility. These areas will be targeted for control once cooperative efforts have been agreed upon so that effective control of weed populations can be achieved.

Weed infestations that span multiple dispositions or border of responsibility will be contained if co-operative efforts cannot be implemented. Control of only part of a larger infestation is often a futile approach and a containment strategy to prevent further spread is more practical.

Following training of full-time and seasonal staff, weeds that are controlled and need to be removed from a site will be properly disposed of to prevent further spread.

Infestation size and priority for treatment may be determined in discussion with the Forest Health Officer, and/or the M.D. Weed Inspector or as designated by the Weed Control Guidelines when developed by the Province.

3. Activity Status Initiatives

Inventory and Activity Status

As of the submission date of the 2011 GDP, no weed management activities have been completed for the 2011 timber year. Weed management activities completed in the 2010 timber year, the status of the visual inventory and proposed weed management activities for 2011 timber year are outlined in **Table 17**.

Initiatives



A representative from the companies will participate in the collaborative weed working groups organized by ASRD when the group is revitalized. The companies will participate in the 'Peace Area Weed Management Working Group' as meetings are scheduled.

Zavisha will integrate its herbicide program with the 'Regional Herbicide Initiative' put together by Milo Mihajlovich of Incremental Forest Technologies.

ENVIRONMENTAL STEWARDSHIP

DMI's management philosophy is to manage the forests under its care using sustainable forest stewardship principles that take biological, economic and social values into consideration. DMI is currently registered to ISO 14001, certified to CSA Z809:02 and has achieved Forest Stewardship Council (FSC) Controlled Wood CoC Certification.

Currently, all of Canfor's BC and Alberta woodlands forest management systems are certified to CSA Z809:02 and the ISO 14001 Standard. These standards commit the company to responsible environmental forest stewardship. The company has documented processes in place to guide their operations to ensure compliance to all laws and regulations.

Zavisha is working towards getting ISO 14001 Standard certification by the end of 2011.

Section 4 - Slash Disposal

Slash and debris will be disposed of as per the Alberta Forest and Prairie Protection Act as well as the Forest Protection Debris Disposal Guidelines and DMI's current Operating Ground Rules. In some operating areas, chipping debris may be processed and transferred to the mill to be used to fuel the boiler or left as inventory piled in the block to be removed the following timber year. Blocks that have hog inventory left for the remaining timber year will have roads left open. Hog inventory blocks will be addressed as outstanding operations in the following years AOP. DMI procedures for hogging on crown land are included in the DMI Operating Ground Rules.



Section 5 - Forest Protection Plan

As per the Forest Prairie Protection Act and associated regulations, DMI developed and submitted a forest protection plan to SRD. Approval has been received from SRD for our 2011 submission. Canfor and Zavisha have their own Forest Protection plans they will be following that will be submitted under separate cover.

Section 6 - Reforestation Program

Reforestation programs for DMI, Canfor and Zavisha are submitted to ASRD under separate cover and provide a brief but clear summary of all planned silviculture for the 2011 timber year.

Section 7 - As-Built Plans

As-built information is summarized annually as cutblock information is gathered on harvested areas, either through aerial photography and interpretation and/or GPS reconnaissance. The **Appendix 1: Tables 18, 19 and 20** provide detailed summaries of DMI's, Canfor's and Zavisha's new blocks and associated roads from the most recently acquired information.



APPENDIX 1: TABLES



TABLE 1: DECIDUOUS PRODUCTION TO DATE

FMA0900045 (Westside) (Jul 1, 2009 - Apr 30, 2029)	Q1: Jul 1 - Apr 30, 2014			Production by Operating Year (m3)				
	PAC	Cut	% Cut	2009	2010	2011	2012	2013
Company Operations		319,398		115,024	204,374			
Incidental from CTLs		73,970		19,186	54,784			
Incidental from CTPs		0						
TDA (Salvage) & Destroyed		2,171		647	1,524			
Retention		0						
Crossings		158		64	94			
FMA CHARGEABLE	2,011,202	395,697	19.67%	134,921	260,776	0	0	0

FMA0900044 (Eastside) (Jul 1, 2009 - Apr 30, 2029)	Q1: Jul 1 - Apr 30, 2014			Production by Operating Year (m3)				
	PAC	Cut	% Cut	2009	2010	2011	2012	2013
Company Operations		397,810		164,722	233,088			
Incidental from CTLs		47,772		5,301	42,471			
Incidental from CTPs		0						
TDA (Salvage) & Destroyed		32,231		17,649	14,582			
Retention		0						
Crossings		64		34	30			
FMA CHARGEABLE	2,642,493	477,877	18.08%	187,706	290,171	0	0	0

DTAP530001 (White Zone) (Jul 1, 2009 - Apr 30, 2029)	Q1: May 1, 2009 - Apr 30, 2014			Production by Operating Year (m3)				
	PAC	Cut	% Cut	2009	2010	2011	2012	2013
Company Operations		248,724		131,564	117,160			
Incidental from CTLs & CTPs		0						
SALVAGED FIBRE		0						
Crossings		15			15			
DTA P530001 CHARGEABLE	625,000	248,739	39.80%	131,564	117,175	0	0	0

DTAP180001 (old P7) (Jul 1, 2009 - Apr 30, 2029)	Q2: May 1, 2009 - Apr 30, 2014			Production by Operating Year (m3)				
	PAC	Cut	% Cut	2009	2010	2011	2012	2013
Company Operations		0						
Incidental from CTLs & CTPs		0						
TDA (Salvage) & Destroyed		0						
Crossings		0						
DTA P150001 CHARGEABLE	277,383	0	0.00%	0	0	0	0	0

DTAP160001 (P16) (Jul 1, 2009 - Apr 30, 2029)	Q2: May 1, 2009 - Apr 30, 2014			Production by Operating Year (m3)				
	PAC	Cut	% Cut	2009	2010	2011	2012	2013
Company Operations		219,468		153,031	66,437			
Incidental from FMA		201,349		83,382	117,967			
TDA (Salvage) & Destroyed		1,808		1,808				
Crossings		225		199	26			
DTA P160001 CHARGEABLE	1,264,585	422,850	33.44%	238,420	184,430	0	0	0

DTAF260006 (TOLKO HL) (Jul 1, 2009 - Apr 30, 2029)	Q2: May 1, 2006 - Apr 30, 2011			Production by Operating Year (m3)				
	PAC	Cut	% Cut	2006	2007	2008	2009	2010
Company Operations		65,518		49,719	14,299	1,500	0	0
Incidental from CTLs & CTPs		36,688		36,688	0	0	0	0
TDA (Salvage) & Destroyed		850,993		117,450	170,122	143,811	167,972	251,638
Crossings		0		0	0	0	0	0
DTA F260006 CHARGEABLE	899,185	953,199	106.01%	203,857	184,421	145,311	167,972	251,638

Other Mill Wood Sources (Jul 1, 2009 - Apr 30, 2029)	Q1: July 1, 2009 - Apr 30, 2014			Production by Operating Year (m3)				
	PAC	Cut	% Cut	2009	2010	2011	2012	2013
Private Purchase - Local		366,816		155,756	211,060			
Private Purchase - Non Local		0						
Other Crown Wood Sources (Incl Woodlots)		312,339		256,433	55,906			
Outside Purchase (Dec chips)		0						
White Zone Permits and Salvage		33,682		5,238	28,444			
First Nation/Métis		385		385				
NON-FMA CHARGEABLE		713,222		417,812	295,410	0	0	0

NOTE, VOLUMES UP TO APRIL 30, 2008 HAVE BEEN AUDITED BY THE FOREST MANAGEMENT BRANCH OF ASRD
VOLUMES AFTER APRIL 30, 2008 HAVE NOT HAD AUDITS COMPLETED. THIS YEARS AUDIT IS SCHEDULED FOR SEPTEMBER.
TO COMPLETE 2009 AND START THE 2010 TIMBER AUDIT.

**DTA530001 is in the process of being renewed.



TABLE 2: CONIFEROUS PRODUCTION TO DATE

CTQP190001(CTLP130001) (Canfor)		Q1 May 1, 2010 - Apr 30, 2014			Production by Operating Year (m3)				
(May 1, 2006 - Apr 30, 2011)	PAC	Cut	% Cut	2010	2011	2012	2013	2014	
Company Operations		178,159		178,159					
Incidental		17,737		17,737					
Volume Drian Crossings)		238		238					
Retention		1,285		1,285					
Roundwood to DMI		2,044		2,044					
DMI chipped conifer		33,110		33,110					
TDA (Salvage) & Destroyed		1,444		1,444					
Quota Chargeable	903,345	234,017	25.91%	234,017	0	0	0	0	

CTQP520003(CTLP520008) (Canfor)		Q1 May1, 2009 - Apr 30, 2014			Production by Operating Year (m3)				
(May1, 2009 - Apr 30, 2014)	PAC	Cut	% Cut	2009	2010	2011	2012	2013	
Company Operations		0		0	0				
Incidental from CTLs		0							
Incidental from CTPs		0							
TDA (Salvage) & Destroyed		0							
Retention		0							
Crossings		0							
Quota Chargeable	15,975	0	0.00%	0	0	0	0	0	

CTQP190002(CTLP130004) (Zavisha)		Q1 May 1, 2010 - Apr 30, 2015			Production by Operating Year (m3)				
(May1, 2009 - Apr 30, 2014)	PAC	Cut	% Cut	2010	2011	2012	2013	2014	
Company Operations		35,621		35,621					
Incidental from CTLs		0							
Incidental from CTPs		0							
TDA (Salvage) & Destroyed		0							
Retention		0							
Crossings		0							
Quota Chargeable	136,720	35,621	26.05%	35,621	0	0	0	0	

CTQP520002(CTLP520007) (Zavisha)		Q1 May1, 2009 - Apr 30, 2014			Production by Operating Year (m3)				
(May1, 2009 - Apr 30, 2014)	PAC	Cut	% Cut	2009	2010	2011	2012	2013	
Company Operations		25,928		25,928	0				
TDA (Salvage) & Destroyed		0							
Quota Chargeable	28,809	25,928	90.00%	25,928	0	0	0	0	

Other Mill Wood Sources (Zavisha)		Q1: July 1, 2009 - Apr 30, 2014			Production by Operating Year (m3)				
(Jul 1, 2009 - Apr 30, 2029)	PAC	Cut	% Cut	2009	2010	2011	2012	2013	
Private Purchase - Local		6,532		445	6,087				
Other Crown Wood Sources (Incl Woodlots)		2,451		1,106	1,345				
White Zone Permits and Salvage		37,618		4,326	33,292				
NON-FMA CHARGEABLE		46,601		5,877	40,724	0	0	0	

FMA0900045(CTQP130005) (DMI WESTSIDE)		Q1: July 1, 2009 - Apr 30, 2014			Production by Operating Year (m3)				
(May1, 2009 - Apr 30, 2014)	PAC	Cut	% Cut	2009	2010	2011	2012	2013	
Company Operations		76,712		30,377	46,335				
TDA (Salvage) & Destroyed		2,388		1,962	426				
Retention		0							
Crossings		0							
Quota Chargeable	282,791	79,100	27.97%	32,339	46,761	0	0	0	

FMA0900044 (DMI EASTSIDE)		Q1: July 1, 2009 - Apr 30, 2014			Production by Operating Year (m3)				
(May1, 2009 - Apr 30, 2014)	PAC	Cut	% Cut	2009	2010	2011	2012	2013	
Company Operations		71,429		58,527	12,902				
TDA (Salvage) & Destroyed		13,610		12,427	1,183				
Retention		0							
Crossings		0							
Quota Chargeable	935,228	85,039	9.09%	70,954	14,085	0	0	0	



TABLE 3: OUTSTANDING OPERATIONS

Disposition	Block	Conifer Volume	Deciduous Volume	Comments
DTLP530001	0219	Under a Load(50m3)	8,196	Winter Felled Inventory
	0220	197	24,678	
	0222	847	18,793	
	0225	751	15,557	
Cadotte Lake Harmon Valley	0102	4,010	0	Buchanan's Conifer in DMI blocks & summer road decompaction
	0105	500	0	
	0106	600	0	
	0107	800	0	
Sulpher Lake P2-200	0061	Under a Load(50m3)	3,286	Winter Felled Inventory
	0063	Under a Load(50m3)	3,020	
	0064	Under a Load(50m3)	5,211	
	0854	7020	1,000	Roadside
	0948	6840	0	
East Peace Whiskey Jack	0246	Under a Load(50m3)	44,000	Winter Felled Inventory
	0269	Under a Load(50m3)	6,000	
	0255			summer road decompaction
	0269			
DTLP160001	3003	Under a Load(50m3)	22,000	Volume is in borrow pits or along LOC in proposed cut blocks
LOC 951150	New Whiskey Jack Road	250	1,900	Winter Felled Inventory
Cadotte Lake - Cadotte Tower (South)	0005	Under a Load(50m3)	3,500	Winter Felled Inventory
East Peace- Cache Creek	0076	0	0	summer road decompaction
	0135	0	0	
	0136	0	0	
East Peace- Keppler Creek	0014			summer road decompaction
	0022			
	0023			
	0030			
	0031			
	0033			
	0034			
	0035			
0036				



Disposition	Block	Conifer Volume	Deciduous Volume	Comments
Deer Hill P2-100	0013	Under a Load(50m3)	26,592	Winter Felled Inventory
	0111	Under a Load(50m3)	1,249	
	0120	Under a Load(50m3)	4,183	
	0121	Under a Load(50m3)	3,003	
	0122	Under a Load(50m3)	7,061	
	0020			Hog Inventory
	0023			
	0026			
	0027			
	0029			
	0056			
	0057			
	0058			
	0101			
	0107			
	0130			summer road decompaction
	0106			
	0108			
	0109			
	0110			
	0112			
	0115			
	0118			
	0119			
	0123			
	0124			
	0127			
	0128			
	0129			



TABLE 4: DMI BLOCK STATUS REPORT

Operating Area	Block	Block Opened	Skid Cleared	Haul Cleared	Final Cleared	Piles Burned	Piles Scanned
DTLP130001	0207						
DTLP140001	0003						
	0019						
	0020						
	0021						
	0022						
	0023						
	0024						
	0025						
	0044						
	0045						
	0046						
	0051						
	0052						
	0053						
	0066						
	0067						
	0075						
	0078						
	0079						
	0115						
	0116						
	0117						
	0118						
	0119						
	0120						
	0121						
	0134						
	0138						
1302							
DTLP160001	0308						
	0337						
	0619						
	3003						
	3007						
	3012						
	3030						
	3033						
	3034						
	3035						
	3037						
	3083						
	3092						
	3401						
	3403						
	3405						
	4002						
	4003						
4004							
4005							
4006							
4007							
4008							



Operating Area	Block	Block Opened	Skid Cleared	Haul Cleared	Final Cleared	Piles Burned	Piles Scanned
	4009						
	4011						
	4012						
	4013						
	4014						
	4015						
	4016						
	4017						
	4019						
	4020						
	4021						
DTLP530001	0202						
	0203						
	0204						
	0205						
	0207						
	0208						
	0209						
	0210						
	0212						
	0213						
	0219						
	0220						
	0222						
	0225						
DTLP910007	1016						
FMA0200041	0322						
	0345						
	3164						
	3171						
	3201						
CL-HarmonValley	0102						
	0105						
	0106						
	0107						
	0108						
	0109						
	0111						
	0117						
	0122						
	0123						
	0126						
	0129						
	0130						
	0133						
	0501						
	0503						
	0504						
	0505						
	0506						
	0507						
	0509						
	0511						
CT-South	0005						
EP-CacheCreek	0020						
	0021						
	0022						



Operating Area	Block	Block Opened	Skid Cleared	Haul Cleared	Final Cleared	Piles Burned	Piles Scanned
	0023						
	0024						
	0028						
	0076						
	0135						
	0136						
EP-KeplerCreek	0011						
	0012						
	0013						
	0014						
	0015						
	0016						
	0017						
	0018						
	0022						
	0023						
	0024						
	0026						
	0030						
	0031						
	0032						
	0033						
	0034						
	0035						
	0036						
EP-WhiskeyJack	0200						
	0201						
	0202						
	0203						
	0204						
	0205						
	0206						
	0207						
	0208						
	0209						
	0210						
	0211						
	0212						
	0213						
	0214						
	0221						
	0223						
	0226						
	0227						
	0230						
	0231						
	0232						
	0233						
	0234						
	0235						
	0236						
	0237						
	0238						
	0239						
	0240						
	0241						
	0245						



Operating Area	Block	Block Opened	Skid Cleared	Haul Cleared	Final Cleared	Piles Burned	Piles Scanned
	0246						
	0254						
	0255						
	0269						
CH-Worsley	0001						
	0002						
	0010						
DH-P2100	0013						
	0020						
	0022						
	0023						
	0026						
	0027						
	0028						
	0029						
	0056						
	0057						
	0058						
	0060						
	0101						
	0106						
	0107						
	0108						
	0109						
	0110						
	0111						
	0112						
	0113						
	0114						
	0115						
	0116						
	0117						
	0118						
	0119						
	0120						
	0121						
	0122						
	0123						
	0124						
	0127						
	0128						
	0129						
	0130						
DH-WhitemudTower	0061						
	0062						
	0063						
	0064						
	0065						
	0066						
	0067						
SU-P2200	0003						
	0006						
	0007						
	0012						
	0013						
	0029						
	0030						



Operating Area	Block	Block Opened	Skid Cleared	Haul Cleared	Final Cleared	Piles Burned	Piles Scanned
	0031						
	0032						
	0033						
	0034						
	0037						
	0038						
	0050						
	0051						
	0052						
	0053						
	0054						
	0055						
	0061						
	0062						
	0063						
	0064						
	0094						
	0096						
	0097						
	0098						
	0099						
	0100						
FMAP130111	0003						
	0024						
	0026						
	0036						
FMAP130113	0019						
FMAP130127	0008						
DTPS210001	0302						
	0303						
	0312						
	0313						
	0314						
	0315						
	0316						
	0332						
	0333						
	0334						
	0403						
	0404						
	0405						
	0406						
	0408						
	0409						
	0410						
	0411						
	0413						
	0414						
	0415						
	0420						
	0421						
	0424						
	0425						
	0439						
	0440						
	0442						
	0444						



Operating Area	Block	Block Opened	Skid Cleared	Haul Cleared	Final Cleared	Piles Burned	Piles Scanned
	0445						
	0600						
	0603						
	0605						
	0606						
	0607						
	0608						
	0609						
	0611						
	0612						
	0613						
	0632						
	0804						
	0807						
	0808						
	0817						
	0818						
	0819						
	0826						



TABLE 5: CANFOR BLOCK STATUS REPORT

State	Operational Sub Unit or OA	Compartment	Block ID	Opening Number	Merch Area (ha)	Block Type	LFS Harvest Approval	Harvesting Started	Skid Clearance	Haul Clearance	Inv.	Reclam.	Top Piled	Piles Burnt	Piles Scanned	Final Clearance	Final Trapper Notification	Pushover	Fund	Comments
QUOTA_HC	CTLP130001	0123	P130001-0123	6120880123	8.2	HAR	08/18/2008	02/02/2009	03/09/2009	03/09/2009		03/18/2009	03/16/2009	12/10/2009	04/23/2010	09/01/2010	09/18/2008		IQ	to be Final cleared in 2011
QUOTA_HC	CTLP130001	0202	P130001-0202	6090880202	10.4	HAR	11/21/2008	11/28/2008	01/02/2009	02/26/2009		04/20/2009	02/26/2009	12/10/2009	04/23/2010	09/01/2010	10/08/2008		IQ	to be Final cleared in 2011
QUOTA_HC	CTLP130001	0253	P130001-0253	6090880253	35.2	HAR	11/13/2008	11/20/2008	01/02/2009	02/24/2009		04/20/2009	02/24/2009	12/10/2009	04/23/2010	09/01/2010	10/08/2008		IQ	to be Final cleared in 2011
QUOTA_HC	CTLP130001	0333	P130001-0333	6090880333	40.1	HAR	11/13/2008	11/20/2008	02/09/2009	03/12/2009		04/24/2009	04/24/2009	11/01/2010	05/01/2011	09/01/2010	10/08/2008		IQ	to be Final cleared in 2011
QUOTA_HC	CTLP130001	0498	P130001-0498	6090880498	58.7	HAR	11/21/2008	02/02/2009	02/26/2009	03/03/2009		04/02/2009	04/02/2009	12/10/2009	04/23/2010	09/01/2010	10/08/2008		IQ	to be Final cleared in 2011
QUOTA_HC	CTLP130001	0697	P130001-0697	6100870697	57.5	HAR	11/20/2008	12/10/2008	01/29/2009	02/12/2009		03/02/2009	03/02/2009	12/10/2009	04/23/2010	09/01/2010	09/18/2008		IQ	to be Final cleared in 2011
QUOTA_HC	CTLP130001	0826	P130001-0826	6100860826	9.1	HAR	11/20/2008	01/30/2009	03/02/2009	03/02/2009		03/10/2009	03/10/2009	11/01/2010	05/01/2011	09/01/2010	09/18/2008		IQ	to be Final cleared in 2011
QUOTA_HC	CTLP130001	1224	P130001-1224	6090881224	55.8	HAR	11/13/2008	11/13/2008	02/13/2009	03/12/2009		04/02/2009	03/20/2009	12/10/2009	04/23/2010	09/01/2010	10/08/2008		IQ	to be Final cleared in 2011
QUOTA_HC	CTLP130001	1275	P130001-1275	6090881275	11.6	HAR	11/21/2008	01/19/2009	02/09/2009	03/03/2009		03/20/2009	03/20/2009	12/10/2009	04/23/2010	09/01/2010	10/08/2008		IQ	to be Final cleared in 2011
QUOTA_HC	CTLP130001	1287	P130001-1287	6110861287	26.5	HAR	11/20/2008	01/24/2009	03/02/2009	03/02/2009		03/10/2009	03/10/2009	12/10/2009	04/23/2010	09/01/2010	09/18/2008		IQ	to be Final cleared in 2011
QUOTA_HC	CTLP130001	1376	P130001-1376	6090881376	14.8	HAR	11/21/2008	02/09/2009	03/02/2009	03/12/2009		03/12/2009	03/12/2009	12/10/2009	04/23/2010	09/01/2010	10/08/2008		IQ	to be Final cleared in 2011
QUOTA_HC	CTLP130001	2230	P130001-2230	6120872230	7.5	HAR	08/18/2008	11/15/2008	12/09/2008	01/26/2009		02/18/2009	02/18/2009	12/10/2009	04/23/2010	09/01/2010	09/18/2008		IQ	to be Final cleared in 2011
QUOTA_HC	CTLP130001	2242	P130001-2242	6120872242	10.4	HAR	08/18/2008	11/17/2008	01/26/2009	01/26/2009		02/18/2009	02/18/2009	12/10/2009	04/23/2010	09/01/2010	09/18/2008		IQ	to be Final cleared in 2011
QUOTA_HC	CTLP130001	2265	P130001-2265	6110862265	12.5	HAR	11/20/2008	01/08/2009	01/30/2009	01/30/2009		01/30/2009	01/30/2009	12/10/2009	04/23/2010	09/01/2010	09/18/2008		IQ	to be Final cleared in 2011
QUOTA_HC	CTLP130001	2314	P130001-2314	6120872314	14.1	HAR	08/18/2008	11/12/2008	12/09/2008	01/06/2009		02/18/2009	02/18/2009	12/10/2009	04/23/2010	09/01/2010	09/18/2008		IQ	to be Final cleared in 2011
QUOTA_HC	CTLP130001	2341	P130001-2341	6120872341	6.7	HAR	08/18/2008	11/11/2008	12/09/2008	01/06/2009		01/14/2009	01/14/2009	12/10/2009	04/23/2010	09/01/2010	09/18/2008		IQ	to be Final cleared in 2011
QUOTA_HC	CTLP130001	2458	P130001-2458	6120872458	7.3	HAR	08/18/2008	12/08/2008	01/26/2009	01/26/2009		02/20/2009	02/20/2009	12/10/2009	04/23/2010	09/01/2010	09/18/2008		IQ	to be Final cleared in 2011
QUOTA_HC	CTLP130001	2539	P130001-2539	6120872539	8.3	HAR	08/18/2008	12/06/2008	01/26/2009	01/26/2009		02/20/2009	02/20/2009	12/10/2009	04/23/2010	09/01/2010	09/18/2008	04/21/2009	IQ	to be Final cleared in 2011
QUOTA_HC	CTLP130001	2575	P130001-2575	6120872575	5.3	HAR	08/18/2008	12/07/2008	01/26/2009	01/26/2009		02/20/2009	02/20/2009	12/10/2009	04/23/2010	09/01/2010	09/18/2008		IQ	to be Final cleared in 2011
QUOTA_HC	CTLP130001	2619	P130001-2619	6120872619	6.8	HAR	08/18/2008	12/05/2008	01/26/2009	01/26/2009		02/23/2009	02/23/2009	12/10/2009	04/23/2010	09/01/2010	09/18/2008		IQ	to be Final cleared in 2011
QUOTA_HC	CTLP130001	2678	P130001-2678	6120872678	22.0	HAR	08/18/2008	11/22/2008	01/26/2009	01/26/2009		02/23/2009	02/23/2009	12/10/2009	04/23/2010	09/01/2010	09/18/2008		IQ	to be Final cleared in 2011
QUOTA_HC	CTLP130001	2709	P130001-2709	6090872709	2.1	HAR	11/21/2008	12/22/2008	01/23/2009	02/04/2009		04/20/2009	02/12/2009	12/10/2009	04/23/2010	09/01/2010	10/08/2008		IQ	to be Final cleared in 2011
QUOTA_HC	CTLP130001	2749	P130001-2749	6090872749	5.8	HAR	11/21/2008	01/06/2009	02/12/2009	02/26/2009		04/20/2009	02/26/2009	12/10/2009	04/23/2010	09/01/2010	10/08/2008		IQ	to be Final cleared in 2011
QUOTA_HC	CTLP130001	2766	P130001-2766	6090872766	7.7	HAR	11/21/2008	01/29/2009	02/20/2009	02/26/2009		04/20/2009	03/06/2009	12/10/2009	04/23/2010	09/01/2010	10/08/2008	04/21/2009	IQ	to be Final cleared in 2011
QUOTA_HC	CTLP130001	3373	P130001-3373	6090873373	8.7	HAR	11/18/2008	11/24/2008	01/22/2009	02/03/2009		04/20/2009	02/04/2009	12/10/2009	04/23/2010	09/01/2010	10/08/2008		IQ	to be Final cleared in 2011
QUOTA_HC	CTLP130001	3414	P130001-3414	6090873414	28.8	HAR	11/21/2008	01/09/2009	02/02/2009	02/02/2009		04/13/2009	02/26/2009	12/10/2009	04/23/2010	09/01/2010	10/08/2008		IQ	to be Final cleared in 2011
QUOTA_HC	CTLP130001	3421	P130001-3421	6090873421	8.1	HAR	11/21/2008	01/03/2009	01/22/2009	12/22/2008		04/20/2009	02/26/2009	12/10/2009	04/23/2010	09/01/2010	10/08/2008		IQ	to be Final cleared in 2011
QUOTA_HC	CTLP130001	3542	P130001-3542	6120873542	13.1	HAR	08/18/2008	12/01/2008	01/26/2009	01/26/2009		02/23/2009	02/23/2009	11/01/2010	05/01/2011	09/01/2010	09/18/2008		IQ	to be Final cleared in 2011
QUOTA_HC	CTLP130001	3562	P130001-3562	6120873562	10.6	HAR	08/18/2008	11/26/2008	12/17/2008	01/26/2009		02/23/2009	02/23/2009	12/10/2009	04/23/2010	09/01/2010	09/18/2008		IQ	to be Final cleared in 2011
QUOTA_HC	CTLP130001	3613	P130001-3613	6120873613	7.0	HAR	08/18/2008	11/28/2008	12/17/2008	01/26/2009		02/23/2009	02/23/2009	12/10/2009	04/23/2010	09/01/2010	09/18/2008		IQ	to be Final cleared in 2011
QUOTA_HC	CTLP130001	3670	P130001-3670	6120873670	18.6	HAR	08/18/2008	02/01/2009	03/09/2009	03/09/2009		03/18/2009	03/16/2009	12/10/2009	04/23/2010	09/01/2010	09/18/2008		IQ	to be Final cleared in 2011
QUOTA_HC	CTLP130001	0385	P130001-0385	6120880385	4.2	HAR	11/21/2007	02/07/2008	02/12/2008	03/13/2008		04/04/2008	04/04/2008	01/10/2009	05/21/2009	09/01/2011	10/12/2007		IQ	
QUOTA_HC	CTLP130001	0397	P130001-0397	6120880397	5.0	HAR	11/21/2007	02/05/2008	02/18/2008	12/01/2008		04/04/2008	04/04/2008	01/10/2009	05/21/2009	09/01/2011	10/12/2007		IQ	
QUOTA_HC	CTLP130001	0529	P130001-0529	6090890529	49.9	HAR	08/11/2009	11/06/2009	01/11/2010	02/01/2010		04/01/2010	04/01/2010	11/01/2010	05/01/2011	09/01/2011	09/11/2009		IQ	
QUOTA_HC	CTLP130001	0755	P130001-0755	6120870755	5.0	HAR	08/30/2007	02/05/2008	03/18/2008	03/18/2008		03/18/2008	03/18/2008	01/10/2009	04/27/2009	09/01/2011	10/03/2007		IQ	
QUOTA_HC	CTLP130001	0806	P130001-0806	6120880806	18.1	HAR	11/21/2007	12/27/2007	02/18/2008	03/18/2008		04/04/2008	04/04/2008	01/10/2009	05/21/2009	09/01/2011	10/12/2007	07/15/2008	IQ	
QUOTA_HC	CTLP130001	0842	P130001-0842	6120870842	17.9	HAR	08/30/2007	01/25/2008	03/18/2008	03/18/2008		03/18/2008	03/18/2008	01/10/2009	04/27/2009	09/01/2011	10/03/2007		IQ	
QUOTA_HC	CTLP130001	0855	P130001-0855	6120870855	3.2	HAR	08/30/2007	01/17/2008	02/21/2008	02/21/2008		03/18/2008	03/18/2008	01/10/2009	04/27/2009	09/01/2011	10/03/2007		IQ	
QUOTA_HC	CTLP130001	0867	P130001-0867	6120870867	5.7	HAR	08/30/2007	01/15/2008	02/12/2008	02/12/2008		03/18/2008	03/18/2008	01/10/2009	04/27/2009	09/01/2011	10/03/2007		IQ	
QUOTA_HC	CTLP130001	0872	P130001-0872	6120870872	19.7	HAR	08/30/2007	01/11/2008	03/18/2008	03/18/2008		03/18/2008	03/18/2008	01/10/2009	04/27/2009	09/01/2011	10/03/2007		IF	
QUOTA_HC	CTLP130001	1017	P130001-1017	6080881017	70.2	HAR	08/11/2009	01/16/2010	02/24/2010	03/02/2010		04/01/2010	04/01/2010	11/01/2010	05/01/2011	09/01/2011	08/11/2009		IQ	
QUOTA_HC	CTLP130001	1139	P130001-1139	6080881139	50.5	HAR	08/11/2009	12/08/2009	01/20/2010	02/01/2010		04/13/2010	04/13/2010	11/01/2010	05/01/2011	09/01/2011	08/11/2009		IQ	
QUOTA_HC	CTLP130001	118	P130001-118	6040893235	43.1	HAR	10/12/2006	12/06/2006	03/15/2007	03/15/2007		03/20/2007	03/15/2007	11/01/2010	05/01/2011	09/01/2011	10/20/2006		IQ	
QUOTA_HC	CTLP130001	1180	P130001-1180	6040891680	6.8	HAR	11/30/2006	01/31/2007	02/16/2007	02/22/2007		02/22/2007	02/22/2007	04/07/2009	05/21/2009	09/01/2011	10/20/2006		IQ	
QUOTA_HC	CTLP130001	1181	P130001-1181	6040891625	20.6	HAR	11/30/2006	01/24/2007	02/22/2007	03/21/2007		03/27/2007	02/22/2007	12/10/2009	04/23/2010	09/01/2011	10/20/2006		IQ	
QUOTA_HC	CTLP130001	1182	P130001-1182	6040890937	93.6	HAR	11/30/2006	12/05/2006	02/02/2007	02/22/2007		03/22/2007	02/22/2007	04/07/2009	05/21/2009	09/01/2011	10/20/2006		IQ	
QUOTA_HC	CTLP130001	1185	P130001-1185	6040891665	13.5	HAR	11/30/2006	01/29/2007	02/22/2007	02/22/2007		02/22/2007	02/22/2007	12/10/2009	04/23/2010	09/0				

State	Operational Sub Unit or OA	Compartment	Block ID	Opening Number	Merch Area (ha)	Block Type	LFS Harvest Approval	Harvesting Started	Skid Clearance	Haul Clearance	Inv.	Reclam.	Top Piled	Piles Burnt	Piles Scanned	Final Clearance	Final Trapper Notification	Postharv.	Fund.	Comments	
QUOTA_HC	CTLP130001	2021	P130001-2021	6080882021	39.0	HAR	08/11/2009	02/11/2010	03/03/2010	04/13/2010		04/13/2010	04/13/2010	11/01/2010	05/01/2011	09/01/2011	08/11/2009		IQ		
QUOTA_HC	CTLP130001	2081	P130001-2081	6110872081	13.5	HAR	11/21/2007	12/11/2007	01/12/2008	02/28/2008		02/28/2008	02/28/2008	12/10/2009	04/23/2010	09/01/2011	10/12/2007	07/15/2008		IQ	
QUOTA_HC	CTLP130001	2122	P130001-2122	6080882122	13.3	HAR	08/11/2009	01/28/2010	02/24/2010	03/02/2010		04/13/2010	04/13/2010	11/01/2010	05/01/2011	09/01/2011	08/11/2009		IQ		
QUOTA_HC	CTLP130001	2166	P130001-2166	6130862166	16.6	HAR	12/06/2007	12/30/2007	02/04/2008	02/04/2008		03/13/2008	02/11/2008	01/10/2009	04/27/2009	09/01/2011	10/03/2007		IQ		
QUOTA_HC	CTLP130001	2176	P130001-2176	6080882176	8.9	HAR	08/11/2009	12/29/2009	01/26/2010	03/02/2010		03/02/2010	03/02/2010	11/01/2010	05/01/2011	09/01/2011	08/11/2009		IQ		
QUOTA_HC	CTLP130001	2227	P130001-2227	6080882227	4.4	HAR	08/11/2009	01/03/2010	01/20/2010	03/02/2010		03/02/2010	03/02/2010	11/01/2010	05/01/2011	09/01/2011	08/11/2009		IQ		
QUOTA_HC	CTLP130001	2235	P130001-2235	6130872235	11.2	HAR	01/02/2008	02/06/2008	03/10/2008	03/10/2008		03/10/2008	03/10/2008	01/10/2009	05/21/2009	09/01/2011	10/03/2007		IQ		
QUOTA_HC	CTLP130001	2237	P130001-2237	6120862237	8.9	HAR	08/30/2007	11/30/2007	02/11/2008	02/11/2008		02/21/2008	02/21/2008	01/10/2009	04/27/2009	09/01/2011	10/03/2007		IQ		
QUOTA_HC	CTLP130001	2283	P130001-2283	6120872283	21.6	HAR	11/21/2007	01/21/2008	02/08/2008	02/15/2008		02/28/2008	02/28/2008	01/10/2009	04/27/2009	09/01/2011	10/12/2007		IQ		
QUOTA_HC	CTLP130001	2287	P130001-2287	6120872287	7.0	HAR	11/21/2007	01/18/2008	01/23/2008	02/28/2008		02/28/2008	02/28/2008	01/10/2009	04/27/2009	09/01/2011	10/12/2007		IQ		
QUOTA_HC	CTLP130001	2319	P130001-2319	6120872319	11.6	HAR	11/21/2007	01/10/2008	01/19/2008	02/08/2008		02/28/2008	02/28/2008	01/10/2009	04/27/2009	09/01/2011	10/12/2007		IQ		
QUOTA_HC	CTLP130001	2360	P130001-2360	6080882360	7.6	HAR	08/11/2009	11/29/2009	12/07/2009	01/26/2010		03/02/2010	03/02/2010	11/01/2010	05/01/2011	09/01/2011	08/11/2009		IQ		
QUOTA_HC	CTLP130001	2587	P130001-2587	6120862587	2.8	HAR	12/06/2007	12/19/2007	01/16/2008	01/22/2008		02/26/2008	01/25/2008	01/10/2009	04/27/2009	09/01/2011	10/03/2007		IQ		
QUOTA_HC	CTLP130001	2593	P130001-2593	6120872593	6.6	HAR	11/21/2007	12/03/2007	12/10/2007	01/10/2008		02/28/2008	02/28/2008	01/10/2009	04/27/2009	09/01/2011	10/03/2007		IQ		
QUOTA_HC	CTLP130001	2696	P130001-2696	6130862696	9.3	HAR	08/30/2007	11/02/2007	01/10/2008	01/10/2008		02/21/2008	02/21/2008	01/10/2009	04/27/2009	09/01/2011	10/03/2007		IQ		
QUOTA_HC	CTLP130001	2955	P130001-2955	6120862955	13.7	HAR	08/30/2007	11/14/2007	02/11/2008	02/11/2008		02/21/2008	02/21/2008	01/10/2009	04/27/2009	09/01/2011	10/03/2007		IQ		
QUOTA_HC	CTLP130001	3024	P130001-3024	6110873024	5.9	HAR	11/21/2007	11/27/2007	12/10/2007	01/10/2008		02/28/2008	02/28/2008	01/10/2009	04/27/2009	09/01/2011	10/21/2007		IQ		
QUOTA_HC	CTLP130001	3059	P130001-3059	6110863140	6.6	HAR	12/06/2007	12/20/2007	01/16/2008	01/22/2008		02/26/2008	01/25/2008	01/10/2009	04/27/2009	09/01/2011	10/12/2007		IQ		
QUOTA_HC	CTLP130001	3065	P130001-3065	6110873054	17.8	HAR	11/21/2007	12/06/2007	01/10/2008	01/21/2008		02/28/2008	02/28/2008	01/10/2009	04/27/2009	09/01/2011	10/12/2007	07/15/2008		IQ	
QUOTA_HC	CTLP130001	3074	P130001-3074	6120863074	2.4	HAR	11/23/2007	11/14/2007	12/03/2007	01/10/2008		01/31/2008	01/31/2008	01/10/2009	04/27/2009	09/01/2011	10/03/2007		IQ		
QUOTA_HC	CTLP130001	3120	P130001-3120	6110873120	23.0	HAR	11/21/2007	12/17/2007	01/10/2008	01/24/2008		02/28/2008	02/28/2008	12/10/2009	04/23/2010	09/01/2011	10/12/2007	07/15/2008		IQ	
QUOTA_HC	CTLP130001	3124	P130001-3124	6110863124	6.8	HAR	12/06/2007	12/11/2007	01/16/2008	01/21/2008		02/26/2008	01/25/2008	01/10/2009	04/27/2009	09/01/2011	10/12/2007		IQ		
QUOTA_HC	CTLP130001	3223	P130001-3223	6120863223	12.1	HAR	01/02/2008	01/06/2008	02/05/2008	02/05/2008		02/21/2008	02/21/2008	01/10/2009	04/27/2009	09/01/2011	10/03/2007		IQ		
QUOTA_HC	CTLP130001	3338	P130001-3338	6090873338	19.7	HAR	08/11/2009	11/10/2009	12/09/2009	12/23/2009		03/23/2010	03/23/2010	11/01/2010	05/01/2011	09/01/2011	08/11/2009		IQ		
QUOTA_HC	CTLP130001	3353	P130001-3353	6090873353	5.9	HAR	08/11/2009	11/09/2009	11/23/2009	02/10/2010		02/23/2010	02/23/2010	11/01/2010	05/01/2011	09/01/2011	08/11/2009		IQ		
QUOTA_HC	CTLP130001	3357	P130001-3357	6090873357	1.1	HAR	08/11/2009	11/13/2009	11/24/2009	12/23/2009		02/16/2010	02/16/2010	11/01/2010	05/01/2011	09/01/2011	08/11/2009		IQ		
QUOTA_HC	CTLP130001	3435	P130001-3435	6090873435	5.2	HAR	08/11/2009	11/10/2009	12/02/2009	12/23/2009		02/10/2010	02/10/2010	11/01/2010	05/01/2011	09/01/2011	08/11/2009		IQ		
QUOTA_HC	CTLP130001	3464	P130001-3464	6130873464	29.9	HAR	01/02/2008	02/08/2008	03/10/2008	03/10/2008		03/10/2008	03/10/2008	01/10/2009	05/21/2009	09/01/2011	10/03/2007		IQ		
QUOTA_HC	CTLP130001	3532	P130001-3532	6130873532	8.9	HAR	01/02/2008	02/15/2008	03/10/2008	03/10/2008		03/10/2008	03/10/2008	01/10/2009	05/21/2009	09/01/2011	10/03/2007		IQ		
QUOTA_HC	CTLP130001	3562	P130001-3562	6120863562	33.9	HAR	08/30/2007	11/16/2007	01/02/2008	01/02/2008		02/26/2008	01/03/2008	10/11/2009	04/23/2010	09/01/2011	10/12/2007		IQ		
QUOTA_HC	CTLP130001	3671	P130001-3671	6120863680	13.0	HAR	12/06/2007	12/17/2007	01/22/2008	01/22/2008		02/26/2008	01/25/2008	01/10/2009	04/27/2009	09/01/2011	10/12/2007		IQ		
QUOTA_HC	CTLP130001	412	P130001-412	6130862412	8.0	HAR	12/06/2007	12/03/2007	01/24/2008	01/24/2008		02/11/2008	02/11/2008	01/10/2009	04/27/2009	09/01/2011	10/03/2007		IQ		
QUOTA_HC	CTLP130001	86	P130001-86	604089986	6.8	HAR	10/12/2006	11/24/2006	12/06/2006	12/30/2006		01/30/2007	01/30/2007	04/07/2009	05/21/2009	09/01/2011	10/20/2006		IQ		
QUOTA_HC	CTLP130001	CH_01	P130001-0483	6090880483	14.3	HAR	10/28/2009	11/17/2009	12/09/2009	01/10/2010		04/22/2010	04/22/2010	11/01/2010	05/01/2011	09/01/2011	08/11/2009		IQ		
QUOTA_HC	CTLP130001	CH-01	P130001-2743	6090872743	62.2	HAR	08/11/2009	11/06/2009	11/23/2009	01/20/2010		02/23/2010	02/23/2010	11/01/2010	05/01/2011	09/01/2011	08/11/2009		IQ		
QUOTA_HC	CTLP130001	1995	P130001-1995	6080881995	4.8	HAR	08/11/2009	02/18/2010	03/02/2010	04/13/2010		04/13/2010	04/13/2010	11/15/2010	05/15/2012	09/15/2012	08/11/2009		IQ		
QUOTA_HC	CTLP130001	CH-01	P130001-0283	6100880283	8.0	HAR	08/11/2009	11/27/2009	12/30/2009	01/19/2010		03/25/2010	03/25/2010	12/01/2010	05/01/2011	11/01/2011	10/02/2009		IQ		
QUOTA_HC	CTLP130001	CH-01	P130001-1272	6100881272	45.5	HAR	08/11/2009	11/02/2009	12/30/2009	01/19/2010		03/25/2010	03/25/2010	12/01/2010	05/01/2011	11/01/2011	10/02/2009		IQ		
QUOTA_HC	CTLP130001	CH-01	P130001-3075	6090873075	19.0	HAR	08/11/2009	11/19/2009	11/27/2009	11/27/2009		03/25/2010	03/25/2010	11/01/2010	04/01/2011	11/01/2011	10/02/2009		IQ		
QUOTA_HC	CTLP130001	CH-01	P130001-0122	6100880122	21.5	HAR	08/11/2009	12/04/2009	12/30/2009	01/19/2010		03/25/2010	03/25/2010	12/01/2010	05/01/2011	11/01/2011	10/02/2009		IQ		
QUOTA_HC	CTLP130001	CH-01	P130001-0234	6100880234	9.9	HAR	08/11/2009	12/08/2009	12/30/2009	01/19/2010		03/25/2010	03/25/2010	12/01/2010	05/01/2011	11/01/2011	10/02/2009		IQ		
QUOTA_HC	CTLP130001	CH-01	8709-3399	6090873399	9.8	HAR	10/05/2010	02/01/2011	02/10/2011	03/18/2011		03/25/2011	03/25/2011	11/15/2011	05/15/2012	05/15/2012	06/07/2010		IQ		
QUOTA_HC	CTLP130001	CH-01	8809-0203	6090880203	24.7	HAR	10/05/2010	11/09/2010	12/20/2010	03/09/2011		03/31/2011	03/31/2011	11/15/2011	05/15/2012	05/15/2012	06/07/2010		IQ		
QUOTA_HC	CTLP130001	CH-01	8809-0227	6090880227	16.1	HAR	10/05/2010	12/01/2010	01/21/2011	03/09/2011		03/31/2011	03/31/2011	11/15/2011	05/15/2012	05/15/2012	06/07/2010		IQ		
QUOTA_HC	CTLP130001	CH-01	8809-0256	6090880256	11.3	HAR	10/05/2010	01/04/2011	02/15/2011	03/07/2011		03/31/2011	03/31/2011	11/15/2011	05/15/2012	05/15/2012	06/07/2010		IQ		
QUOTA_HC	CTLP130001	CH-01	8809-0370	6090880370	22.3	HAR	10/05/2010	11/09/2010	11/23/2010	12/21/2010		03/18/2011	03/18/2011	11/15/2011	05/15/2012	05/15/2012	06/07/2010		IQ		
QUOTA_HC	CTLP130001	CH-01	8809-0593	6090880593	9.2	HAR	10/05/2010	11/04/2010	11/16/2010	12/21/2010		03/18/2011	03/18/2011	11/15/2011	05/15/2012	05/15/2012	06/07/2010		IQ		
QUOTA_HC	CTLP130001	CH-01	8809-0598	6090880598	41.6	HAR	10/05/2010	11/22/2010	01/21/2011	01/21/2011		03/18/2011	03/18/2011	11/15/2011	05/15/2012	05/15/2012	06/07/2010		IQ		
QUOTA_HC	CTLP130001	CH-01	8809-0785	6090880785	65.7	HAR	10/05/2010	01/05/2011													

TABLE 6: ZAVISHA BLOCK STATUS REPORT

Licence	Block	Block Opened	Skid Cleared	Haul Cleared	Piles Burned	Post Burn Survey	Final Cleared
CTLTP130005(FMA900045)	17	10-Sep-10	25-Oct-10	15-Dec-10			
CTLTP130005(FMA900045)	15	1-Nov-10	24-Nov-10	31-Dec-10			
CTLTP130005(FMA900045)	015A	25-Oct-10	24-Nov-10	31-Dec-10			
CTLTP130005(FMA900045)	4	10-Nov-10	13-Dec-10	15-Jan-11			
CTLTP130005(FMA900045)	11	20-Dec-10	3-Mar-11	18-Mar-11			
CTLTP130005(FMA900045)	12	2-Jan-11	10-Mar-11	18-Mar-11			
CTLTP130005(FMA900045)	3	25-Nov-10	3-Mar-11	18-Mar-11			
CTLTP130005(FMA900045)	10	10-Jan-11	3-Mar-11	18-Mar-11			
CTLTP130004	20	25-Feb-11	3-Mar-11	22-Mar-11			
CTLTP130004	21	15-Feb-11	3-Mar-11	22-Mar-11			
CTLTP130004	22	15-Jan-11	3-Mar-11	18-Mar-11			
CTLTP130004	08B	28-Jan-11	3-Mar-11	18-Mar-11			
CTLTP130004	14B	22-Jan-11	14-Mar-11	15-Mar-11			
CTLTP130004	16	10-Oct-10	24-Nov-10	24-Dec-10			

In CTLTP130004 block 453 has 6 piles left to be burnt. The burning of these piles is scheduled for November 1, 2011.

TABLE 7: DMI ROADS WITH PROPOSED ACTIVITIES

Operating Area	Road Number	Road Class	Skid Tyear	Year of Last Road Activity	Last Road Activity	Last Road Activity Details	Proposed Activity
DTLP130001	207	V	2008	2010	Monitor	Pile Burning Required	Monitor
DTLP140001	45	V	2008	2010	Monitor	Pile Burning Required	Monitor
FMAP040120	8	V	2007	2010	Monitor	Pile Burning Required	Monitor
	10	V	2007	2010	Monitor	Pile Burning Required	Monitor
	17	V	2008	2010	Monitor	Pile Burning Required	Monitor
	39	V	2008	2010	Monitor	Pile Burning Required	Monitor
FMAP130111	2	V	2008	2010	Monitor	Pile Burning Required	Monitor
	3	V	2008	2010	Monitor	Pile Burning Required	Monitor
	25	V	2008	2010	Monitor	Pile Burning Required	Monitor
	27	V	2008	2010	Monitor	Pile Burning Required	Monitor
	28	V	2008	2010	Monitor	Pile Burning Required	Monitor
	35	V	2008	2010	Monitor	Pile Burning Required	Monitor
FMAP130125	37	V	2008	2010	Monitor	Pile Burning Required	Monitor
	47	V	2008	2010	Monitor	Pile Burning Required	Monitor

TABLE 8: ZAVISHA ROADS WITH PROPOSED ACTIVITIES

Zavisha's have no block roads that have been open over two years after harvest.



TABLE 9: SEQUENCING OF DMI OPERATIONS

1. FOREST MANAGEMENT AREA FMA0900044

LICENSE	2011	2012	2013	2014	2015
CL-Harmon Valley	100,000	100,000			
CL-Caddotte T		120,000	110,000		
EP- Whiskey Jack	300,000	240,000	200,000	200,000	200,000
EP-Kepler C	100,000	110,000			110,000
EP-Cache C	200,000		110,000	100,000	100,000
CT-South	20,000				
TOTAL	720,000	570,000	420,000	300,000	410,000

2. FOREST MANAGEMENT AREA FMA0900045

LICENSE	2011	2012	2013	2014	2015
DH-P2100	200,000	30,000			
DH-Hines C		90,000		-	
KR- Twin L		120,000			
KR-Vesta Creek			50,000		120,000
KR-Keg River				100,000	
KE- Hawkhill T					120,000
SU- P2200	150,000	25,000	30,000	25,000	25,000
SU- Notikewin R	100,000		180,000	220,000	100,000
SL-Whitemud R		110,000		70,000	
TOTAL	450,000	375,000	260,000	415,000	365,000

3. DECIDUOUS TIMBER ALLOCATION P530001 (DTAP530001)

LICENSE	2011	2012	2013	2014	2015
DTLP510001					
DTLP530001**	150,000		-		
DTLP530009					
DTLP530010		80,000	-	-	
DTLP530011				150,000	150,000
TOTAL	150,000	80,000	-	150,000	150,000

**Quadrant cut to be completed within four years.

4. DECIDUOUS TIMBER ALLOCATION P160001 (DTAP160001)

LICENSE	2011	2012	2013	2014	2015
DTLP160001	180,000	180,000	180,000	156,000	175,000
TOTAL	180,000	180,000	180,000	156,000	175,000

5. DECIDUOUS TIMBER ALLOCATION P180001 (DTAP180001)

LICENSE	2011	2012	2013	2014	2015
DTLP180001	-	-	-	-	-
TOTAL	-	-	-	-	-

6. CONIFERUOUS TIMBER PERMIT (CTPP530295)

LICENSE	2011	2012	2013	2014	2015
CTPP530295***	25,000	-	-	-	-
TOTAL	25,000	-	-	-	-

***This volume is deciduous volume

7. FOREST MANAGEMENT AREA FMA0200039

LICENSE	2011	2012	2013	2014	2015
DTPS210001***	5,000	-	-	-	-
TOTAL	5,000	-	-	-	-

***Permit ends April 2012.

8. DECIDUOUS TIMBER ALLOCATION F260006

LICENSE	2011	2012	2013	2014	2015
FMAF260006	-	-	-	-	-
TOTAL	-	-	-	-	-

GRAND TOTAL	1,530,000	1,205,000	860,000	1,021,000	1,100,000
-------------	-----------	-----------	---------	-----------	-----------

The volumes for the 2011 Annual Operating Plans include contingency blocks. Any remaining volume will be carried to the following year.

In P19 operating areas beyond 2010 will be determined by the impact of the Mountain Pine Beetle.

DMI is currently working with ASRD on a Timber Supply Analysis for DTAP530001.

DTPS210001 was approved in October 2009; 322,000 m3 deciduous to DMI over three years.



TABLE 10: SEQUENCING OF CANFOR OPERATIONS**1. CONIFERUOS TIMBER ALLOCATION P190001 (CTLP130001)**

LICENSE	2011	2012	2013	2014	2015
DH-HinesCreek	27,503				
ST-Whitemud	110,000	136,284			131,744
SU-P2200	41,000				
RL-Whitemud	21,000	75,968			89,798
ST-EurekaRiver					26,770
CH-Worsley	31,000	19,000			
BO-SweenyCreek			126,360		
RL-DoigRiver			87,151	246,009	
TOTAL	230,503	231,252	213,511	246,009	248,312

1. CONIFERUOS TIMBER ALLOCATION P52

LICENSE	2011	2012	2013	2014	2015
P52	0	0	15,975	3,195	3,195
TOTAL	-	-	15,975	3,195	3,195

GRAND TOTAL	230,503	231,252	229,486	249,204	251,507
--------------------	----------------	----------------	----------------	----------------	----------------

TABLE 11: SEQUENCING OF ZAVISHA OPERATIONS**1. CONIFERUOS TIMBER ALLOCATION P190002 (CTLP130004)**

OP AREA	LICENSE	2011	2012	2013	2014	2015
ST-Whitemud	CTLP130004	57,634	33,465		20,000	20,000
	FMA0900045	30,000	38,485			
RL-Whitemud	CTLP130004					
	FMA0900045		20,515	7,673	38,485	38,485
ST-EurekaRiver	CTLP130004	5,000	5,000		15,918	15,918
	FMA0900045	8,485	10,535			
	TOTAL	101,119	108,000	7,673	74,403	74,403

2. CONIFERUOS TIMBER ALLOCATION P520002 (CTLP520007)

LICENSE	2011	2012	2013	2014	2015
CTLP520007	3,000	0	0	6,254	6,254
TOTAL	3,000	-	-	6,254	6,254

GRAND TOTAL	104,119	108,000	7,673	80,657	80,657
--------------------	----------------	----------------	--------------	---------------	---------------



TABLE 12: INCIDENTAL CONIFER PRODUCTION

Forest Management Areas 0900044

Compartment or Licence	Destination	Estimated m ^{3***}
EP- Whiskey Jack	Boucher Brothers Lumber Ltd.	22,700
	Buchanan Lumber Ltd.	17,300
EP-Kepler C	Boucher Brothers Lumber Ltd.	0
	Buchanan Lumber Ltd.	0
EP-Cache Creek	Boucher Brothers Lumber Ltd.	7,500
	Seehta	5,136
	Buchanan Lumber Ltd.	2,364
CL-Harmon Valley	Buchanan Lumber Ltd.	13,000
Sub-Total		68,000

Forest Management Areas 0900045

Compartment or Licence	Destination	Estimated m ^{3***}
DH-P2100	Canfor Grande Prairie	45,000
SU- P2200	Canfor Grande Prairie	22,000
Sub-Total		67,000

DTAP530001

Compartment or Licence	Destination	Estimated m ³
DTLP530001	Boucher Brothers Lumber Ltd.	
Sub-Total		0

DTAP180001 and DTAP160001

Compartment or Licence	Destination	Estimated m ³
DTLP160001	Manning Diversified Forest Products	17,000
Sub-Total		17,000

FMA0200039

Compartment or Licence	Destination	Estimated m ³
DTPS210001	Buchanan Lumber Ltd.	600
Sub-Total		600

TOTAL ALL SOURCES		152,600
-------------------	--	---------

*** The volumes in this table may differ from the associated Annual Operating Plans. This variance is due to the Annual Operating Plans containing contingency blocks. Volumes shown are from blocks that are scheduled to be harvested this year.



TABLE 13: INCIDENTAL DECIDUOUS PRODUCTION

Disposition Holder	Compartment or License	Estimated m³
Manning Diversified	FMAP0200041	60,000
Canadian Forest Products	CTLP130001	35,000
Boucher Brothers Lumber	CTLP140001	50,000
	CTLP040013/16	10,000
Buchanan	CTLP3-L25	40,000
CBVAC	DTLP140001	35,000
Zavisha Sawmills Ltd.	P52	750
	P19	13,000
Total		243,750



TABLE 14: VARIANCE

FMA0900045 Westside Variance

COMPARTMENT	TOTAL COMPARTMENT SHS AREA (HA)	ACTUAL HARVESTED AREA (HA)	VARIANCE						TOTAL UNHARVESTED AREA (HA)	ADDITIONS (HA)
			DELETIONS		DEFERRALS		TOTAL			
			HA	%	HA	%	HA	%		
BO-SweenyC Total	580	0	0		0		0		580	0
TOTAL %				0.0%		0.0%		0.0%		0.0%
CH-Worsley Total	1,476	1,032	16		0		16		444	0
TOTAL %				1.1%		0.0%		1.1%		0.0%
CR-ClearR Total	1,639	20	0		0		0		1,619	0
TOTAL %				0.0%		0.0%		0.0%		0.0%
DH-HinesC Total	1,264								1,264	0
DH-P2100 Total	3,982	764	323		157.2		480		3,218	56
DH-WhitemudT Total	117	188							0	1
SUB TOTAL (HA)	5,362	952	323	0	0	0	480	0	4,481	57
TOTAL %				6.0%		0.0%		9.0%		1.1%
KE-HawkHillsT Total	1,575	0	0		0		0		1,575	0
TOTAL %				0.0%		0.0%		0.0%		0.0%
KR-BothaR Total	222								222	0
KR-KegR Total	35								35	0
KR-SmeatonC Total	1,087								1,087	0
KR-TwinL Total	1,167								1,167	0
KR-VestaC Total	2,681								2,681	0
SUB TOTAL (HA)	5,193	0	0	0	0	0	0	0	5,193	0
TOTAL %				0.0%		0.0%		0.0%		0.0%
NO-NotikewanR Total	1,916	35	3				3		1,881	5
TOTAL %				0.2%		0.0%		0.2%		0.3%
RL-DoigR Total	5,267	5							5,262	6
RL-WhitemudR Total	4,204	31	2				2		4,173	37
SUB TOTAL (HA)	9,471	36	2	0	0	0	2	0	9,435	43
TOTAL %				0.0%		0.0%		0.0%		0.5%
ST-EurekaR Total	1,695	175	99		147		246		1,520	125
ST-RamblingC Total	634								634	0
ST-WhitemudR Total	6,886	32	8		63.7		72		6,854	15
SUB TOTAL (HA)	9,215	207	107	0	211	0	318	0	9,008	140
TOTAL %				1.2%		2.3%		3.4%		1.5%
SU-NotikewinR Total	3,964								3,964	0
SU-P2200 Total	4,183	1,667	140		105.7		245		2,516	135
SUB TOTAL (HA)	8,147	1,667	140	0	0	0	245	0	6,480	135
TOTAL %				1.7%		0.0%		3.0%		1.7%



FMA0900044 Eastside Variance

COMPARTMENT	TOTAL COMPARTMENT SHS AREA (HA)	ACTUAL HARVESTED AREA (HA)	VARIANCE						TOTAL UNHARVESTED AREA (HA)	ADDITIONS (HA)
			DELETIONS		DEFERRALS		TOTAL			
			HA	%	HA	%	HA	%		
CL-CadotteT	6,179								6,179	
CL-HarmonValley	10,813	835	165					165	9,978	197
CL-HeartR	3,847		9					9	3,847	
CL-SimonL	4,795								4,795	
SUB TOTAL (HA)	25,634	835	174	0	0	0	174	0	24,799	197
TOTAL %				0.7%		0.0%		0.7%		0.8%
CT-BisonL	10,489								10,489	
CT-HaigL	8,463								8,463	
CT-LoonPrairie	16,114								16,114	
CT-MartenR	2,986								2,986	
CT-RossbearC	2,968								2,968	
CT-RussellL	2,759								2,759	
CT-SawnL	2,753								2,753	
CT-South	3,075								3,075	
SUB TOTAL (HA)	49,606	0	0	0	0	0	0	0	49,606	0
TOTAL %				0.0%		0.0%		0.0%		0.0%
EP-BuffaloR	17,570								17,570	
EP-CacheC	10,665	488	128		50.2			178	10,177	10
EP-CarmonC	7,121								7,121	
EP-KepplerC	6,340	867	223		91			314	5,473	143
EP-SandHills	6,396								6,396	
EP-WhiskeyJack	8,671	1,176	218		5			223	7,495	317
EP-WolverineC	13,087								13,087	
SUB TOTAL (HA)	69,850	2,531	569	0	146	0	715	0	67,319	471
TOTAL %				0.8%		0.2%		1.0%		0.7%
LC-BuffaloHills	1,188								1,188	
LC-BuffaloT	4,271								4,271	
LC-MuddyR	6,558								6,558	
SUB TOTAL (HA)	12,017	0	0	0	0	0	0	0	12,017	0
TOTAL %				0.0%		0.0%		0.0%		0.0%
RE-North	3,112								3,112	
RE-South	9,726								9,726	
SUB TOTAL (HA)	12,838	0	0	0	0	0	0	0	12,838	0
TOTAL %				0.0%		0.0%		0.0%		0.0%



TABLE 15: RETENTION

	FMA0900044					FMA0900045					GRAND TOTAL
	Boucher	Buchanan	DMI			Canfor	DMI			Zavisha	
			Cadotte Lake	Central	East Peace		Clear Hills	Deer Hill	Sulphur Lake		
2009 PHOTO UPDATE											
Merch Area (Ha)		313.2			1,175.8	748.6	108.0	116.3	308.6	200.1	2,970.6
Ret Large Area (Ha)		0.0			4.1	0.0	0.0	0.0	3.1	4.3	11.4
Ret Small Area (Ha)		1.4			23.2	15.1	1.9	0.5	3.8	1.3	47.1
Ret Single Tree & Clump Area (Ha)		1.9			18.5	9.0	3.4	1.6	2.7	1.3	38.5
Ret Total Area (Ha)		3.2			45.8	24.1	5.4	2.1	9.5	6.9	97.0
Ret Total (%)		1.0			3.7	3.1	4.7	1.8	3.0	3.3	3.2
Ret Large Area (%)		0.0			0.3	0.0	0.0	0.0	1.0	2.1	0.4
Ret Small, Single Tree & Clump (%)		1.0			3.4	3.1	4.7	1.8	2.0	1.3	2.8
2010 PLANNED											
Merch Area (Ha)	440.7		521.5	266.6	1,154.1			1,363.8	261.5	313.7	4,321.9
Ret Large Area (Ha)	0.0		40.0	0.0	50.2			13.6	3.2	38.2	145.2
Ret Small Area (Ha)	1.6		17.7	1.1	34.5			51.3	9.2	7.5	122.9
Ret Single Tree & Clump Area (Ha)	0.6		30.9	1.3	94.1			103.3	17.3	0.4	247.9
Ret Total Area (Ha)	2.2		88.6	2.4	178.8			168.2	29.7	46.1	516.0
Ret Total (%)	0.5		14.5	0.9	13.4			11.0	10.2	12.8	10.7
Ret Large Area (%)	0.0		6.6	0.0	3.8			0.9	1.1	10.6	3.0
Ret Small, Single Tree & Clump (%)	0.5		8.0	0.9	9.6			10.1	9.1	2.2	7.7
2011 PLANNED											
Merch Area (Ha)			595.3	64.5	2,571.1	257.5		1,168.0	910.5		5,309.4
Ret Large Area (Ha)			11.2	0.0	113.3	14.0		7.0	4.6		136.1
Ret Small Area (Ha)			16.3	3.8	12.2	1.8		6.9	13.2		52.4
Ret Single Tree & Clump Area (Ha)			50.6	5.4	188.3	0		15.5	53.4		313.2
Ret Total Area (Ha)			78.1	9.2	313.8	15.8		29.4	71.2		501.7
Ret Total (%)			11.6	12.5	10.9	6.1		2.5	7.2		8.6
Ret Large Area (%)			1.7	0.0	3.9	5.4		0.6	0.5		2.3
Ret Small, Single Tree & Clump (%)			9.9	12.5	7.0	0		1.9	6.8		6.3
Grand Merch Area (Ha)	440.7	313.2	1,116.8	331.1	4,901.0	1006.1	108.0	2,648.1	1,480.6	513.8	12,601.9
Grand Ret Total Area (Ha)	2.2	3.2	166.7	11.6	538.4	39.9	5.4	199.7	110.4	53.0	1,114.7
Grand Ret Total (%)	0.5	1.0	13.0	3.4	9.9	4.0	4.7	7.0	6.9	9.3	8.1
Grand Ret Large Area (%)	0.0	0.0	4.0	0.0	3.1	0.5	0.0	0.7	0.7	7.5	2.1
Grand Ret Small, Single Tree & Clump (%)	0.5	1.0	9.0	3.4	6.8	3.5	4.7	6.3	6.3	1.9	6.0

Retention for 2011 is planned and does not have layout out complete at time of submission.



TABLE 16: ROAD PLANNING, MAINTENANCE AND CONSTRUCTION ACTIVITIES

Activity Type	Company	Disposition	Road Name	Location	Timing
Road Construction	DMI	LOC 951150	Whiskey Jack Road		Summer 2011
		LOC 001150	South Notikewan Road	TWP90-3-W6M; TWP91-3-W6M; TWP91-2-W6M	2011-2013
		EP-Whiskey Jack	EP-Whiskey Jack Spur Roads	Refer to EP-Whiskey Jack FHP/AOP	2011-2013
ROW Vegetation Control (Mow &/or Spot Spray &/or Brushing)	DMI	MD road DMI Maintains LOC 920772 LOC 981731 LOC 982540 LOC 031572 LOC 032031 LOC 012169	East Haul Road	KM 0 - 160 Various Locations	Summer 2011
		LOC 890482	P2-100 Long Lake Road	Km 0-14 various locations	Summer 2011
		LOC 900396	P2-100 Spur	Various location	Summer 2011
		LOC 900131	P2-200 Sulphur Lake Road	Km 0-30 various locations	Summer 2011
		LOC 001150	South Notikewan Road	SE 23-90-3 W5M	Summer 2011
		LOC 900652	P10-100 Keg River Road	Various locations	Summer 2011
		LOC 971107	N/A	NE 8-86-24-W5M, NE 11, N1/2 12, 86-25-W5M	Summer 2011
		LOC 971966	Hawk Hills Road	Km 0-6	Summer 2011
Road Maintenance (i.e. graveling, grading, culvert repairs, sign replacement, etc)	DMI	MD road DMI Maintains LOC 920772 LOC 981731 LOC 982540 LOC 031572 LOC 032031 LOC 012169	East Haul Road	KM 0 - 160 Various Locations	Summer 2011
		LOC 890482	P2-100 Long Lake Road	Km 0-14 various locations	Summer 2011
		LOC 900131	P2-200 Sulphur Lake Road	Km 0-30 various locations	Summer 2011
Bridge Inspections, Repairs &/or Cleaning	CFP	LOC 082590	Clearhills connector Road	Km 13, km 15, km 30	Summer 2011
	CFP	LOC 930654	Canfor 100 Road	Km 54 Bridge and Km 58 Bridge	Summer 2011
	CFP	LOC 3803	Canfor 200 Road	Km 268 Bridge	Summer 2011
	DMI	LOC 001150	South Notikewan Road	SE 23-90-3 W5M	Summer 2011
	DMI	LOC 900652	P10-100 Keg River Road	NE 13-101-25-W5M	Summer 2011
	DMI	MD road DMI Maintains LOC 920770 LOC 981731 LOC 982540 LOC 032031 LOC 012169	East Haul Road	Km 18 - 174.5 Various locations	Summer 2011



TABLE 17: WEED INSPECTION AND CONTROL

ACTIVITY		DISP. HOLDER	LOCATION	MU	Last Activity	Year Completed	2011 Proposed Activity	Comments
LOC	001150	DMI	TWP90-3-W6M; // TWP91-3-W6M; // TWP91-2-W6M;	P2	Monitored	2010		
LOC	5929	DMI	TWP100-24-W5M; SE25, SW25, NE25, SE26, SW26, SE27, SW27, SE36, NE36	P10	Monitored	2010	Monitor	
LOC	012169	DMI	TWP98-16-W5 / TWP99-16-W5 / TWP100-16-W5 / TWP101-16-W5 / TWP101-17-W5	F1	Spot Picked	2010	Pick	
LOC	012383	DMI	TWP85-18-W5; SW10, W3, SE3, S2, NE2	P3			Monitor	
LOC	021534	DMI	TWP82-15-W5; SE32, NE32 / TWP83-15-W5; SE4	P3			Monitor	
LOC	021541	DMI	TWP 93-20-W5M; NE27, SE27, SW23, NE22, SE22, NW14	P5				
LOC	031037	DMI	TWP101-18-W5; N36 / TWP101-17-W5; N31, NW32	F1				
LOC	031572	DMI	TWP 96-17-W5M; E24	P5	Spot Sprayed	2010	Spot spray	
LOC	031929	DMI	TWP88-19-W5; NW34, N35 / TWP89-19-W5; S2, S1 / TWP89-18-W5; S6, S5, S4, E9, S16, E21, NW22, S27, NE27, NW26, S5, NW36 / TWP90-18-W5; S1, NE1, NW6	P4			Monitor	
LOC	032031	DMI	TWP97-16-W5 // TWP96-17W5 // TWP97-17-W5 // TWP 98-16-W5	F1	Spot sprayed & picked	2010	Pick	
LOC	032247	DMI	TWP89-19-W5; N29, SW33, N33, N34, N35, N36 / TWP89-18-W5; N31, N32, SE32	P4				
LOC	062102	DMI	TWP94-23-W5; SE4 - Chin Yard Camp Access Road	P14	Monitored	2010		
LOC	062816	DMI	TWP89-3-W6; SW 25 - EMEND Campsite Access Road	P13	Monitored	2010		
LOC	100846	DMI		MILL SITE				New LOC
LOC	811274	DMI	NON FMA // TWP 84-9-W5M; SW 33	S10	Spot sprayed	2006	Monitor	
LOC	871344	DMI	TWP 94-7-W5M; NW2, NE3, SW11, NW11, SW13, NW13, SE14, SE35	S15	Monitored	2004	Monitor	
LOC	890076	DMI	TWP 96-9-W5M // TWP 96-10-W5M	S15	Monitored	2004		Attempted to survey 2010 - too wet to access with quads
LOC	890482	DMI	TWP 85-24-W5M; NW26, NE26, NE27, NW30, SE31, SW31, SE32, SW32, SE33, SW33, NW33, NE33, SE34, SW34 // TWP 85-25-W5M; SW14, NW14, SE14, SE15, SE23, NE23, NW24, SE25, NW25, NE25	P2	Spot Sprayed & Mowed	2010	Spot Spray & Mow	
LOC	890557	DMI	TWP 98-22-W5M; NE34, NW35, NE35, NW36, NE36 // TWP 99-22-W5M; NE11, NW12, NE12	P10	Monitored	2004		
LOC	890707	DMI	TWP 88-01-W6M; SE24, NW24, NE24	P2	Mowed	2006		



ACTIVITY		DISP. HOLDER	LOCATION	MU	Last Activity	Year Completed	2011 Proposed Activity	Comments
LOC	890780	DMI	TWP 94-7-W5M // TWP 94-8-W5M // TWP 94-9-W5M // TWP 94-10-W5M // TWP 95-10-W5M // TWP 96-10-W5M	S15	Monitored	2004		Attempted to survey 2010 - too wet to access with quads
LOC	890938	DMI	TWP 98-13-W5M; NW13, NE13, NW14, NE14, SW24	F1	Spot Sprayed	2006		
LOC	900038	DMI	TWP 92-7-W5M; NE16, SE21, NE21, NW22, NE22, NW26, SE27, NE27, SW35, NE35, NW36, NE36 // TWP 93-7-W5M; NW1, NE1, SW12, NW12	S15	Monitored	2010	Monitor	
LOC	900131	DMI	TWP 88-1-W6M // TWP 89-2-W6M // TWP 89-3-W6M // TWP 90-3-W6M	P2	Spot Sprayed & Mowed	2010	Spot Spray	
LOC	900396	DMI	TWP 85-24-W5M; SE19, NE 19, NW 20, SW 29, NW 29, SW 32	P2	Monitored	2010	Spot Spray	
LOC	900397	DMI	TWP 85-24-W5M; NW 21, SW 28, NW 28, NE 28, SE 33	P2	Monitored	2010	Monitor	
LOC	900652	DMI	NON FMA // TWP 101-25-W5M; SW14, NW14, NE14, SE15, SE23, SE24, SW24 // TWP101-01-W6M; NW12, NE12, SE13	DTLP53 - 2	Monitored	2010	Pick & Spot Spray	
LOC	920145	DMI	NON FMA // TWP 85-21-W5M; SW13	MILL SITE				
LOC	920510	DMI	NON FMA // TWP 90-24-W5M; S 1/2 14, SW 24, NE 24	DTLP53 - 1			Monitor	
LOC	920770	DMI	TWP 89-19-W5M // TWP 90-19-W5M // TWP 90-20-W5M // TWP 91-20-W5M // TWP 92-20-W5M	P4	mowed and spot sprayed	2010	Spot Spray & Mow	
LOC	940800	DMI	TWP 85-1-W6M; NE24, S 1/2 & NW 25, NE 26, E 33, S 34, S 35	P2	Monitored	2010		
LOC	941524	DMI	TWP 99-22-W5M; NW28, NE28, SW33, NW33	P10	Monitored	2010		
LOC	941641	DMI	TWP 94-8-W5M // TWP 94-9-W5M // TWP 94-10-W5M // TWP 93-11-W5M // TWP 94-11-W5M // TWP 93-12-W5M // TWP 93-13-W5M // TWP 93-14-W5M // TWP 93-15-W5M // TWP 93-16-W5M // TWP 93-17-W5M // TWP 93-18-W5M	S15	Monitored	2005		Attempted to survey 2010 - too wet to access with quads
LOC	942517	DMI	TWP 92-20-W5M; SE4, NE4, NW8, NE8, SE9, NW9, NE9, SE17, SW17, SE18	P5	Monitored	2004	Monitor	
LOC	942757	DMI	TWP 99-24-W5M; SW17, NW17, SE18, SW18, SW20, NW20, SW29, NW29	P10	Monitored	2005		
LOC	950037	DMI	TWP 8215-W5M // TWP 82-16-W5M // TWP 82-17-W5M	P3	Spot Sprayed	2005		
LOC	950065	DMI	NON FMA // TWP 96-22-W5M; NW 31	P10	Monitored	2010		
LOC	951150	DMI		P5			Monitor	New DMI LOC
LOC	951438	DMI	NON FMA // TWP 94-3-W6M; SW 30	DTAP91 - 1	Monitored	2004		
LOC	951672	DMI	TWP 95-17-W5M // TWP 93-18-W5M // TWP 94-18-W5M // TWP 95-18-W5M	P5	Sprayed	2005	Monitor	
LOC	970058	DMI	TWP 92-20-W5; ALL 16, S1/2 21	P5	Monitored	2005		
LOC	971107	DMI	TWP 86-24-W5M; NE8 // TWP 86-25-W5M; NE11, NW12, NE12	P2	Monitored	2010	Spot Spray	
LOC	971922	DMI	NON FMA // TWP 94-3-W6M; NE 11	DTAP91 - 1	Monitored	2004	Monitor	
LOC	971966	DMI	NON FMA // TWP 97-20-W5M; SW 2	P10	Spot Sprayed	2010	Pick & Spot Spray	



ACTIVITY		DISP. HOLDER	LOCATION	MU	Last Activity	Year Completed	2011 Proposed Activity	Comments
LOC	973110	DMI	TWP 85-25-W5M; NW28, SW29, NW29, NE29, SW30, NW30, NE30, SW33, NE33 // TWP 86-25-W5M; NE3, NE3, SE4, NE4, SE10, SW11, NW11, NE11 / TWP 85-26-W5M; NE25, NE26, NE26, SE35, SE36, SW36 // TWP 85-1-W6M; NE25	P2	Monitored	2010	Monitor	
LOC	980355	DMI	NON FMA // TWP 93-5-W5M; SE 30	S14	Monitored	2004		
LOC	980652	DMI	TWP 98-24-W5M; SW6 // TWP 98-25-W5M; SE2, SW2	P10	Monitored	2004	Monitor	
LOC	981731	DMI	TWP 93-18-W5M // TWP 94-18-W5M // TWP 92-19-W5M // TWP-19-W5M // TWP 92-20-W5M	P5	mowed and spot sprayed	2010	Spot Spray	
LOC	982540	DMI	TWP 96-16-W5M // TWP 95-17-W5M // TWP 96-17-W5M // TWP 94-18-W5M	P5	mowed, spot sprayed and picked	2010	Spot Spray	
LOC	990751	DMI	TWP94-24-W5; NW&S1/2 24, NW 13	P6			Monitor	
LOC	991039	DMI	TWP94-24-W5: NE23, NW 24	P6				
LOC	992633	DMI	TWP90-24-W5; E23, E11, 2, SW1	PO3			Monitor	
MLL	030086	DMI	TWP94-23-W5; SE4 - Chin Yard	P14	Spot Sprayed	2010	Monitor	
MLL	060117	DMI	TWP94-23-W5; SE4 - Campsite Chin Yard	P14	Spot Sprayed	2010	Monitor	
MLL	060141	DMI	TWP89-3-W6; SW25 - EMEND Campsite	P13	Monitored	2010		
		DMI	TWP 94-24-W5: 11 of 12 DTLP910001 Blk C3000	DTAP91 - 1	Monitored	2009	Monitor	
LOC	082590	Clear Hills Joint Venture Ltd.	Clear Hills Connector Road 30-87-07-W6M to 11-90-08-W6M; formerly RDS 040010	P19	Spot Sprayed	2009	Monitor	
LOC	3464	Canfor	Canfor 400 Road; Twp 86 Rge 2-3 W6M	P19	Spot Sprayed	2008	Monitor	
LOC	3803	Canfor	Canfor 200 Road; Twp 86-87 Rge 4-10 W6M	P19	Partial Monitor and Treat	2009	Monitor	
LOC	930654	Canfor	Canfor 100 Road; NW4-87-03-W6M, NW21-87-03-W6M; SE28-89-03-W6M	P19	Spot Sprayed	2009	Monitor	
MLL	960033	Canfor	Stony Lake Provincial Recreation Area; N31-86-03-W6M	P19	Spot Sprayed	2009	Monitor	
Private Land		Canfor	Canfor Hines Creek Mill Site/Logyard / Trailer loader - N1/2 15 & Part SW 15-85-4-W6M - no disposition number.	N/A	Spot Sprayed	2009	Monitor	
Private Land		Canfor	Canfor Reload Yard - in Hines Creek - no disposition number	N/A	Spot Sprayed	2009	Monitor	
LOC	930654	Canfor	Twps84, 85, 86-Rg4- W6M Twps86, 87, 88, 89 - Rg3-W6M	P19	mulching	2006	Vegetation Mgmt Inspection	
EZE	2825	Canfor	100 Road; km 4.5 to 5.3; 84-04-W6M	N/A	mulching	2006	Vegetation Mgmt Inspection	



ACTIVITY		DISP. HOLDER	LOCATION	MU	Last Activity	Year Completed	2011 Proposed Activity	Comments
EZE	2826	Canfor	100 Road; Km 3.75 to 4.5; 84-04-W6M	N/A	mulching	2006	Vegetation Mgmt Inspection	
EZE	810059	Canfor	100 Road; km 5.3 to km 9.1; 85-04-W6M	N/A	mulching	2006	Vegetation Mgmt Inspection	
LOC	930987	Zavisha	TWP 85-4-W6M; SE22	P2	Monitored	2009	Monitor	
LOC	891096	Zavisha	TWP 85-4-W6M; NW13, SE23, SW23, SW24	P2	Monitored	2009	Monitor	
LOC	431	Zavisha	NW30 85 3 W6		Monitored	2009	Monitor	
LOC	061619	Zavisha	NW14 90 8 W6		Monitored	2009	Monitor	
LOC	760739	Zavisha	SE22 85 4 W6		Monitored	2009	Monitor	



TABLE 18: DMI AS-BUILT PLAN

Op Area	Block Id	Block Area Ha	Skid Clear Year	Road Existing Area Ha	Road New Cut Area Ha	Chipper Site Area Ha	Road and Chipper Area Ha	Road and Chipper Pct	Comments
CL-HarmonValley	102	39.4	2010	0.2	1	0.5	1.2	3	
	105	6.7	2010	0.2		0.1	0.2	3	
	106	33.2	2010	0.1	0.8	0.5	0.9	2.7	
	107	8.7	2010	0.2		0.1	0.2	2.3	
	108	15.6	2010		0.6	0.3	0.6	3.8	
	109	12.6	2010	0	0.3	0.2	0.3	2.4	
	111	9.2	2010	0.1	0.2	0.2	0.3	3.3	
	117	13.8	2010	0	0.5	0.3	0.5	3.6	
	122	9.6	2010		0.3	0.2	0.3	3.1	
	123	5.6	2010	0.1		0.1	0.1	1.8	
	126	17.9	2010	0.3	0.2	0.3	0.5	2.8	
	129	30.7	2010	0	0.9	0.4	0.9	2.9	
	130	16.6	2010	0.1	0.5	0.2	0.6	3.6	
	133	9.9	2010	0	0.4	0.2	0.4	4	
	501	77.2	2010	1.1	0.5	1.2	1.6	2.1	
	503	17.1	2010	0.2	0.2	0.2	0.4	2.3	
	504	13.8	2010	0.1	0.3	0.3	0.4	2.9	
	505	23.4	2010	0	0.7	0.5	0.7	3	
	506	11.7	2010		0.3	0.2	0.3	2.6	
	507	53.9	2010	0.3	0.9	0.8	1.2	2.2	
509	48.6	2010	0.9		0.6	0.9	1.9		
511	46.3	2010	1	0.1	0.7	1.1	2.4		
						Avg:	2.8		
DH-P2100	20	35.2	2010	0.2	0.8	0.7	1	2.8	
	22	12	2010		0.5	0.3	0.5	4.2	
	23	31.6	2010	0.2	0.7	0.5	0.9	2.8	
	26	9.7	2010	0.1	0.3	0.1	0.4	4.1	
	27	25.2	2010		0.6	0.3	0.6	2.4	
	28	15.8	2010	0	0.3	0.2	0.3	1.9	
	29	10.2	2010	0.1	0.1	0.1	0.2	2	
	56	31.7	2010	0.1	0.7	0.4	0.8	2.5	
	57	84.3	2010	0	1.6	1.2	1.6	1.9	
	58	55.8	2010	0.5	0.8	0.7	1.3	2.3	
	60	21.4	2010		0.4	0.3	0.4	1.9	
	101	32.3	2010		0.8	0.5	0.8	2.5	
	106	31.7	2010	0.1	0.4	0.4	0.5	1.6	
	107	102.1	2010	0	2.2	1.5	2.2	2.2	
	108	3.9	2010		0.1	0.1	0.1	2.6	
109	14.2	2010		0.5	0.3	0.5	3.5		



Op Area	Block Id	Block Area Ha	Skid Clear Year	Road Existing Area Ha	Road New Cut Area Ha	Chipper Site Area Ha	Road and Chipper Area Ha	Road and Chipper Pct	Comments
DH-P2100	110	91.3	2010	0	2.2	1.4	2.2	2.4	
	112	17.9	2010		0.3	0.2	0.3	1.7	
	113	25	2010		0.6	0.3	0.6	2.4	
	114	9.9	2010		0.2	0.2	0.2	2	
	115	56.8	2010		1.5	0.9	1.5	2.6	
	116	41.2	2010	0.5	0.2	0.4	0.7	1.7	
	117	47.6	2010	0.4	0.6	0.6	1	2.1	
	118	37.4	2010		0.9	0.6	0.9	2.4	
	119	28.2	2010	0.2	0.5	0.4	0.7	2.5	
	123	30.3	2010		0.7	0.4	0.7	2.3	
	124	59.6	2010	0.3	0.9	0.8	1.2	2	
	127	16.5	2010	0.1	0.2	0.3	0.3	1.8	
	128	48.3	2010		1	0.7	1	2.1	
	129	98.1	2010	0.4	1.7	1.1	2.1	2.1	
	130	23.1	2010	0	0.5	0.4	0.5	2.2	
							Avg:	2.4	
DTLP140001	21	36.1	2010		0.7		0.7	1.9	
	115	5.8	2010	0.1	0.1		0.2	3.4	
	116	15.6	2010	0.1	0.4		0.5	3.2	
	117	5.2	2010	0.1	0.3		0.4	7.7	Block less than 10 ha
	118	7.5	2010	0	0.4		0.4	5.3	Block less than 10 ha
	119	3.7	2010	0	0.2		0.2	5.4	Block less than 10 ha
	120	40.3	2010	0.1	1.1		1.2	3	
	121	4.7	2010		0.1		0.1	2.1	
	134	3.2	2010		0.1		0.1	3.1	
	138	17.1	2010	0	0.6		0.6	3.5	
	1302	2.2	2010		0.1		0.1	4.5	
							Avg:	3.9	
DTLP160001	308	5.7	2010		0.1	0.1	0.1	1.8	
	3007	10.9	2010		0.4	0.2	0.4	3.7	
	3012	126.9	2010	0.4	2	1.2	2.4	1.9	
	3030	24.6	2010	0.01	0.5	0.3	0.51	2.1	
	3033	14.4	2010		0.3	0.3	0.3	2.1	
	3034	9.2	2010		0.2	0.1	0.2	2.2	
	3035	9.2	2010		0.3	0.2	0.3	3.3	
	3037	10.3	2010	0	0.2	0.1	0.2	1.9	
	3083	5.4	2010	0.1		0.1	0.1	1.9	
	3092	19	2010	0.1	0.2	0.2	0.3	1.6	
	3401	64.3	2010	0.3	1.2	0.9	1.5	2.3	
	3403	28.5	2010		0.4	0.2	0.4	1.4	
3405	23.4	2010	0.3	0.3	0.3	0.6	2.6		
							Avg:	2.2	



Op Area	Block Id	Block Area Ha	Skid Clear Year	Road Existing Area Ha	Road New Cut Area Ha	Chipper Site Area Ha	Road and Chipper Area Ha	Road and Chipper Pct	Comments
DTLP530001	202	146	2010	3.1	1	1.1	4.1	2.8	
	207	123.2	2010	0.5	2	1.3	2.5	2	
	208	139	2010	0.9	1.7	1.3	2.6	1.9	
	209	177.1	2010	2.1	1.2	2	3.3	1.9	
	210	79.5	2010	0.7	1	0.7	1.7	2.1	
	212	112	2010	1.8	0.3	1.1	2.1	1.9	
	213	105.3	2010	1.4	0.5	1.2	1.9	1.8	
							Avg:	2.1	
DTPS210001	600	12.9	2010	0	0.3	0.2	0.3	2.3	
	603	14.6	2010		0.3	0.2	0.3	2.1	
	605	62.6	2010		1.1	0.7	1.1	1.8	
	606	6.7	2010		0.2	0.1	0.2	3	
	607	42.4	2010	0.1	0.9	0.7	1	2.4	
	608	19.1	2010		0.5	0.3	0.5	2.6	
	609	50.3	2010	0.5	0.4	0.5	0.9	1.8	
	804	12.5	2010	0.1	0.1	0.2	0.2	1.6	
	807	22.7	2010	0.3		0.2	0.3	1.3	
	808	49.2	2010	1.1	0	0.6	1.1	2.2	
818	59.4	2010	0.7	0.4	0.5	1.1	1.9		
							Avg:	2.1	
EP-CacheC	20	63.2	2010		1.1	0.5	1.1	1.7	
	21	23.4	2010	0.01	0.7	0.3	0.71	3	
	22	19.8	2010		0.6	0.3	0.6	3	
	23	36.8	2010	0	1	0.5	1	2.7	
	24	35.1	2010		0.7	0.4	0.7	2	
	28	1.6	2010		0.1	0.1	0.1	6.3	Block less than 10 ha
	76	39.4	2010		0.9	0.4	0.9	2.3	
	135	67.7	2010		0.9	0.6	0.9	1.3	
	136	200.6	2010		2.6	1.3	2.6	1.3	
							Avg:	2.6	
EP-KepplerC	14	157.9	2010	0.9	1.4	1.1	2.3	1.5	
	30	19.7	2010		0.4	0.2	0.4	2	
	31	21.8	2010		0.3	0.2	0.3	1.4	
	32	26.9	2010	0.2	0.4	0.4	0.6	2.2	
	33	23.9	2010		0.4	0.3	0.4	1.7	
	34	4.1	2010		0.2	0.1	0.2	4.9	
	35	26.7	2010	0.1	0.3	0.3	0.4	1.5	
	36	84.1	2010		1.5	0.7	1.5	1.8	
							Avg:	2.1	
EP-WhiskeyJack	242	39	2010	0.1	0.8	0.3	0.9	2.3	
	254	8.7	2010		0.2	0.2	0.2	2.3	
	255	18.9	2010		0.2	0.2	0.2	1.1	
							Avg:	1.9	



Op Area	Block Id	Block Area Ha	Skid Clear Year	Road Existing Area Ha	Road New Cut Area Ha	Chipper Site Area Ha	Road Area Ha	Road Pct	Comments
SU-P2200	50	9.2	2010		0.3		0.3	3.3	
	51	11.9	2010		0.3	0.1	0.3	2.5	
	52	13.3	2010	0.3	0	0.1	0.3	2.3	
	53	8.4	2010		0.2	0.2	0.2	2.4	
	54	6.4	2010	0.1	0.1	0.1	0.2	3.1	
	55	8.7	2010	0.1	0		0.1	1.1	
	62	4.4	2010	0.1	0	0.1	0.1	2.3	
	94	1.4	2010	0			0	0	
	96	63.3	2010	0.6	1.5		2.1	3.3	
	97	60.5	2010	0.1	1.6		1.7	2.8	
	98	4.2	2010	0.1			0.1	2.4	
	99	8.3	2010	0.2	0.2		0.4	4.8	
	100	5.5	2010	0.1	0.1		0.2	3.6	
						Avg:	2.6		
						Grand Avg:	2.5		



TABLE 19: CANFOR AS-BUILT PLAN

Block ID	Operating Area	Operating Sub-Unit	Block Type	Block Area (ha)	Road Length (m)	Road Area (ha)	Road %
8709-3399	P13_Licence	CTLTP130001	HAR	9.8	724.9	0.4	3.7
8809-0203	P13_Licence	CTLTP130001	HAR	24.7	1,798.0	0.9	3.6
8809-0227	P13_Licence	CTLTP130001	HAR	16.1	1,406.2	0.7	4.4
8809-0256	P13_Licence	CTLTP130001	HAR	10.6	711.6	0.4	3.4
8809-0370	P13_Licence	CTLTP130001	HAR	22.3	1,683.7	0.8	3.8
8809-0593	P13_Licence	CTLTP130001	HAR	9.2	804.6	0.4	4.4
8809-0598	P13_Licence	CTLTP130001	HAR	41.6	2,495.2	1.2	3.0
8809-0785	P13_Licence	CTLTP130001	HAR	65.7	4,025.5	2.0	3.1
8809-0841	P13_Licence	CTLTP130001	HAR	31.4	1,743.7	0.9	2.8
8809-0951	P13_Licence	CTLTP130001	HAR	6.1	338.7	0.2	2.8
8809-1642	P13_Licence	CTLTP130001	HAR	20.6	1,357.6	0.7	3.3
8809-1721	P13_Licence	CTLTP130001	HAR	4.5	248.8	0.1	2.8
8809-1734	P13_Licence	CTLTP130001	HAR	16.5	1,359.2	0.7	4.1
8809-1853	P13_Licence	CTLTP130001	HAR	7.5	537.1	0.3	3.6
8902-0948	P13_Licence	CTLTP130001	HAR	32.3	282.6	0.1	0.4
8902-1014	P13_Licence	CTLTP130001	HAR	92.3	4,405.1	2.2	2.4
8902-1052	P13_Licence	CTLTP130001	HAR	18.6	877.5	0.4	2.4
8902-1057	P13_Licence	CTLTP130001	HAR	16.9	1,159.3	0.6	3.4
8902-1135	P13_Licence	CTLTP130001	HAR	36.5	1,202.4	0.6	1.6
8902-1333	P13_Licence	CTLTP130001	HAR	38.9	2,158.0	1.1	2.8
8902-1407	P13_Licence	CTLTP130001	HAR	26.0	1,555.8	0.8	3.0
8902-1458	P13_Licence	CTLTP130001	HAR	28.7	1,615.1	0.8	2.8
8902-1481	P13_Licence	CTLTP130001	HAR	25.5	1,261.8	0.6	2.5
8902-1594	P13_Licence	CTLTP130001	HAR	30.2	1,958.4	1.0	3.2
8902-1663	P13_Licence	CTLTP130001	HAR	31.3	2,369.6	1.2	3.8
8902-2374	P13_Licence	CTLTP130001	HAR	22.9	1,292.7	0.6	2.8
8902-2455	P13_Licence	CTLTP130001	HAR	47.1	3,586.4	1.8	3.8



TABLE 20: ZAVISHA AS-BUILT PLAN

Op Area	Block Id	Block Area Ha	Skid Clear Timber Year	Road Existing Area Ha	Road New Cut Area Ha	Road and Chipper Area Ha	Road and Chipper Pct	Comments
CTLP130004	0008B	40.2	2010	0.40	1.10	1.50	3.7	
	0014B	2.5	2010	0.00	0.20	0.20	8.0	Under 10 ha
	0016	20.5	2010	0.20	0.40	0.60	2.9	
	0020	4.2	2010		0.10	0.10	2.4	
	0021	14.3	2010	0.20	0.40	0.60	4.2	
	0022	47.9	2010	0.40	0.90	1.30	2.7	
							Avg: 4.0	
CTLP130005	0003	63.2	2010	1.10	1.60	2.70	4.3	
	0004	8.2	2010	0.20	0.00	0.20	2.4	
	0010	25.5	2010	0.50	0.80	1.30	5.1	terrain
	0011	15.6	2010	0.10	0.30	0.40	2.6	
	0012	12.5	2010	0.00	0.30	0.30	2.4	
	0015	14.1	2010	0.30	0.30	0.60	4.3	
	0015A	2.6	2010	0.10	0.10	0.20	7.7	Under 10 ha
	0017	42.4	2010	0.40	0.50	0.90	2.1	
							Avg: 3.9	