

# Annual Operating Plan

## DTLP530001



Peace River Pulp Division

- |                 |                 |
|-----------------|-----------------|
| D Planned Cut   | DC Planned Cut  |
| C Planned Cut   | CD Planned Cut  |
| Retention       | DUA             |
| D Cutover - NSR | C Cutover - NSR |
| D Cutover - SR  | C Cutover - SR  |
| D Cutover - CSR |                 |
- 
- |                 |                         |
|-----------------|-------------------------|
| Existing Access | Crossing - No structure |
| Proposed Access | Camp Location           |
| As-Built Access | Trapper Cabin           |
|                 | Swan Nesting Site       |
|                 | Planned Feature         |

**Forest**

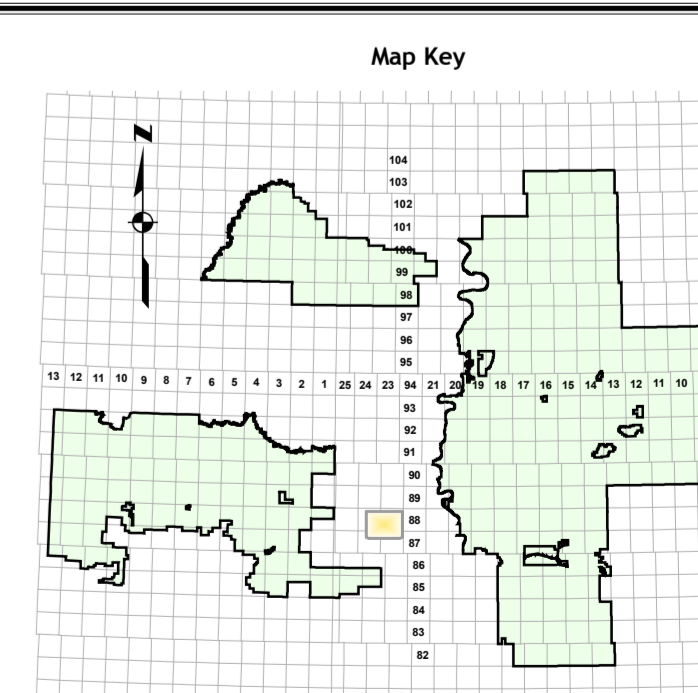
| Density       | Height        | Cover Group              |
|---------------|---------------|--------------------------|
| A -- 6 - 30%  | 0 -- 0 - 6m   | D -- Deciduous           |
| B -- 31 - 50% | 1 -- 7 - 12m  | C -- Coniferous          |
| C -- 51 - 70% | 2 -- 13 - 18m | 5-10 -- Scmposition x 10 |
| D -- 71% +    | 3 -- 19 - 24m |                          |
|               | 4 -- 25 - 30m |                          |
|               | 5 -- 31m +    |                          |

- Non-Productive**
- |              |       |                |       |             |           |
|--------------|-------|----------------|-------|-------------|-----------|
| Treed Muskog | Scrub | Shrubby Muskog | Shrub | Open Muskog | Grassland |
|--------------|-------|----------------|-------|-------------|-----------|
- Example**
- |          |             |         |             |
|----------|-------------|---------|-------------|
| Modifier | Cover Group | Density | Understorey |
| A3D8     | D3C10-3     |         |             |

- Miscellaneous Landbase**
- |    |                         |
|----|-------------------------|
| CL | Clearing                |
| MB | Burn (mineral soil)     |
| GP | Gravel Pit              |
| WS | Wellsite                |
| NV | Naturally non-vegetated |

- Base Features Legend**
- |                          |                        |
|--------------------------|------------------------|
| Permanent Water          | Flooded Area           |
| River / Permanent Stream | Intermittent Stream    |
| Provincial Highway       | High Grade Gravel Road |
| Low Grade Gravel Road    | Truck / Winter Road    |
| Unimproved LOC / Seismic | Trail / Seismic Line   |
| Railroad                 | Pipeline               |
| Powerline                | FMA Boundary           |
| Operating Area Boundary  | License Boundary       |
| Caribou Wildlife Zone    | Ungulate Wildlife Zone |
| Special Access Zone      | LOC Access             |
| LOC Access               | Planned Feature        |

Scale - 1:20,000



Daihowa-Marubeni International Ltd.  
Resource Information Services  
July 13, 2009

**Confidential**  
This material and its contents may not be used, duplicated, communicated or disclosed, in whole or in part, except with the express written permission of Daihowa-Marubeni International Ltd.  
Portions of the 1:20000 base provided by Spatial Data Warehouse Ltd.