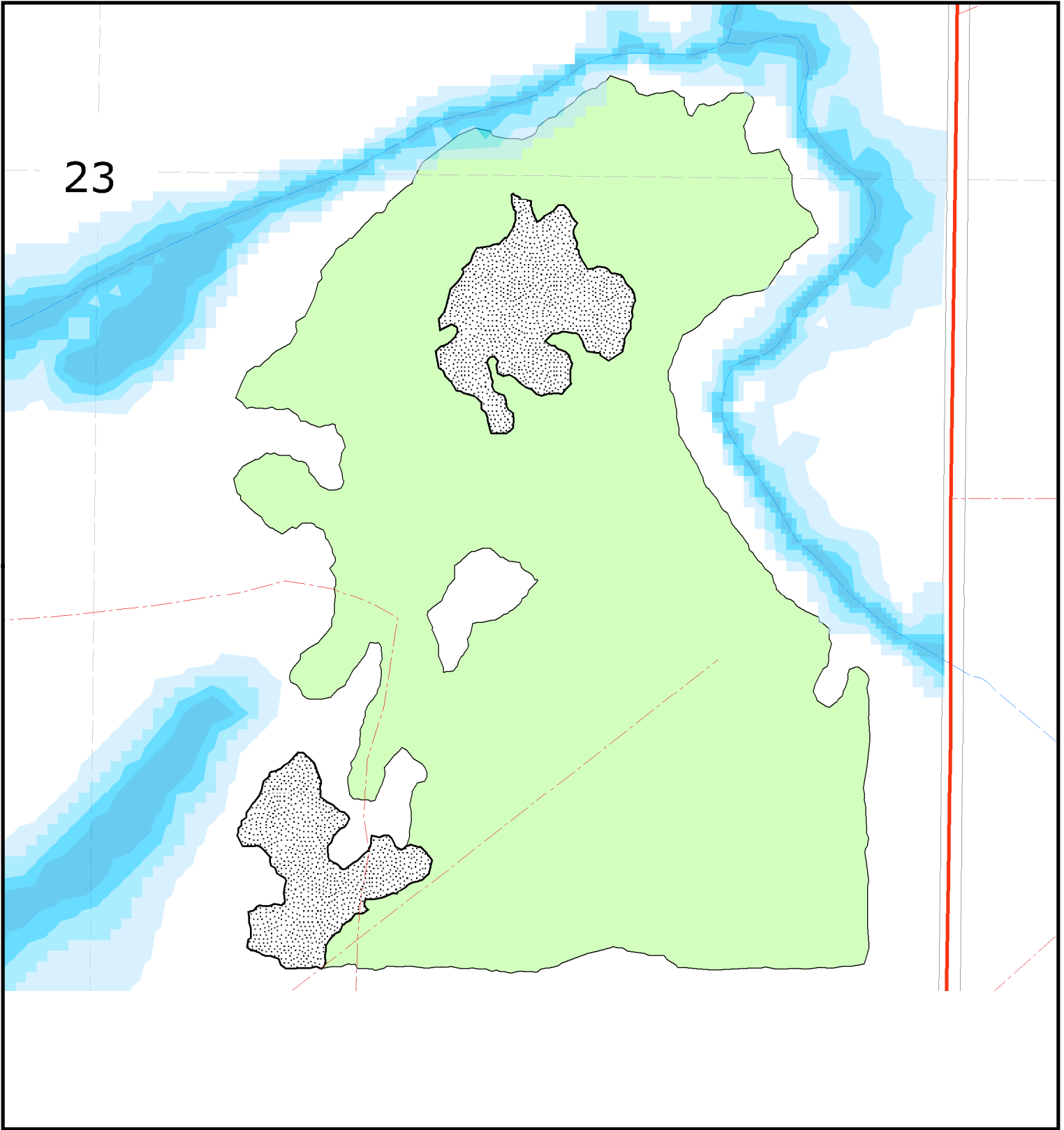


23



Detailed Block Plan
FMAP130125

Block: 43

Planner: T. Tosh Area: 31.28 ha.
 Date: November 6, 2008 Lat/Long:
 Scale: 1:5,000 Retention %:
 Prescription:

- | | | |
|---------------------|---------------------|----------------------|
| Harvested Block | Planned Op Road | Permanent Stream |
| Block | As-Built Op Road | Intermittent Stream |
| Planned Blocks | Existing Road | Ephemeral |
| Block Retention | Pipeline | Potential Ephemeral |
| Lake | Transmission Line | Planned Utility Line |
| Flooded | Seismic | Planned Seismic |
| Wet Area 0.00-0.10m | U/S Skid Trail | Water Crossing |
| Wet Area 0.10-0.25m | Skidder Crossing | Utility Crossing |
| Wet Area 0.25-0.50m | Landuse Disposition | Boundary Water |
| Wet Area 0.50-1.00m | Potential Wet Area | |

Printed copies of this data are uncontrolled;
 contact RIS at Daishowa-Marubeni International
 for the most accurate version.

