







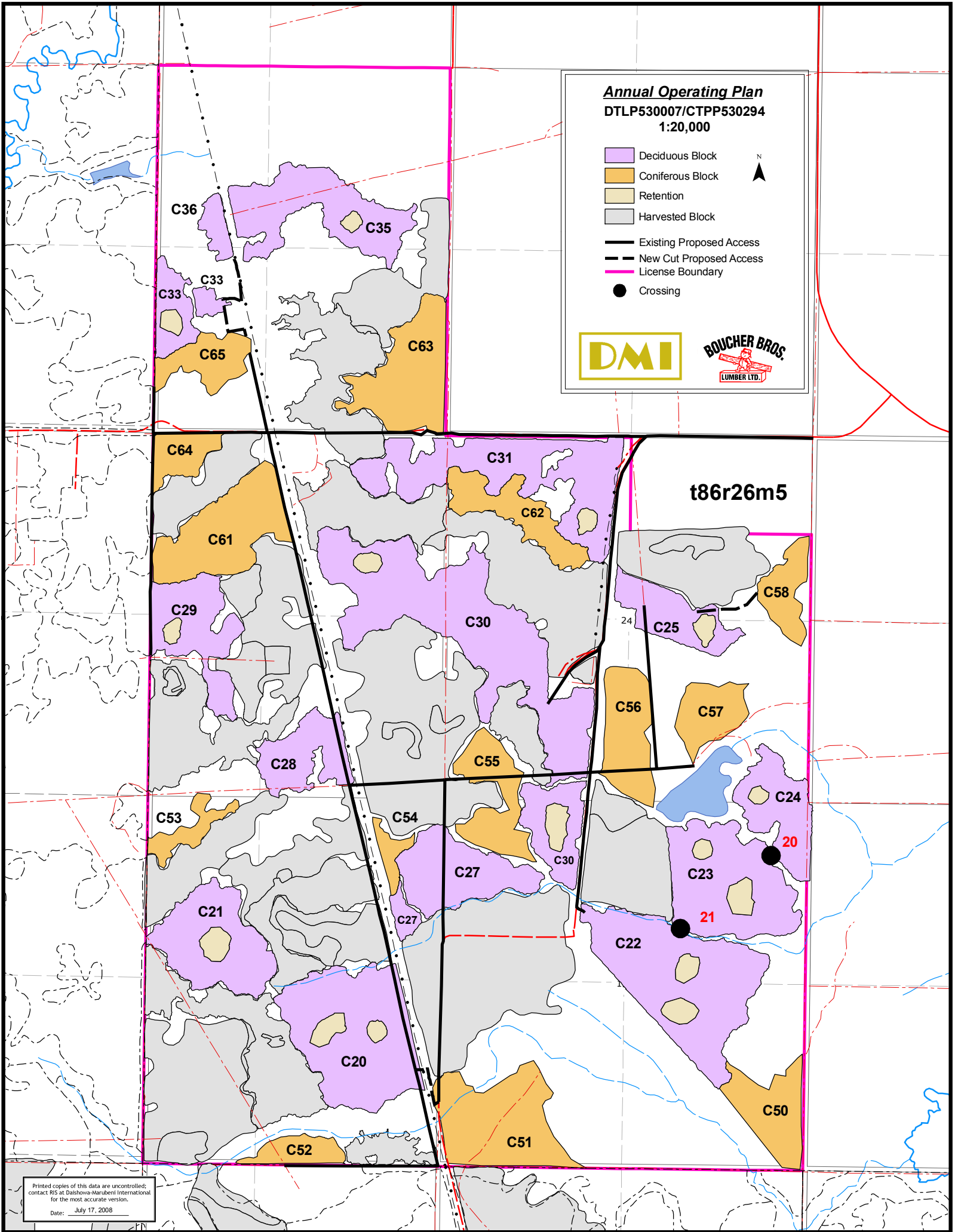


Annual Operating Plan
DTLP530007/CTPP530294
1:20,000

-  Deciduous Block
-  Coniferous Block
-  Retention
-  Harvested Block
-  Existing Proposed Access
-  New Cut Proposed Access
-  License Boundary
-  Crossing



Printed copies of this data are uncontrolled;
 contact RIS at Dalshova-Marubeni International
 for the most accurate version.
 Date: July 17, 2008